

Mobile EL basic

In situ and on-site module testing

Innovative inspection solutions
for on-site testing



High resolution on-site electroluminescence testing with the light weight in situ system

- Field proven design
- Fastest throughput
- Automatic Reporting
- Made in Germany

The MBJ Mobile EL basic is the first light weight system on the market for in situ high resolution electroluminescence module testing. With the Mobile EL basic hidden defects - like micro cracks and inactive areas - can be identified quickly and reliable on site. Dismounting of panels for EL testing is not necessary anymore!

Mobile EL basic

In situ and on-site module testing



Compact and easy to use equipment

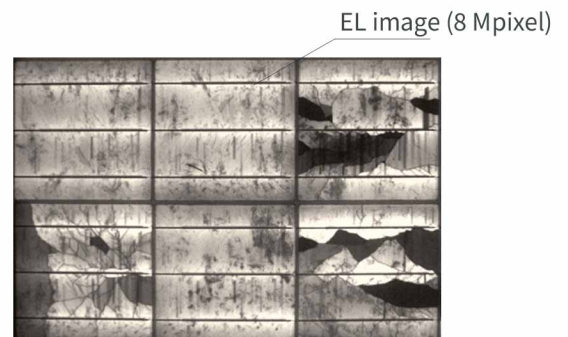


Field of Application

The Mobile EL basic system allows high quality electroluminescence testing at the power plant without the need to unmount the installed panels. The EL images provide up to 8 Mpixel resolution per panel which allows the detection of micro cracks, the main goal of any EL testing.

The intuitive software supports the operator decision based on the MBJ judgment criterias. The result is automatically compiled into a detailed report and stored as PDF document. Additionally measured data is saved into a database. Analysis and reporting can be done on-site or, in a second step, later in the office. The office analysis software is included in the system package. Image collection on-site has to be done after dark to avoid the influence of any level of sun irradiation. Single panels can also be tested indoors in a darkend room.

The stand alone system is delivered in a compact transport case with an integrated power supply and PC system with UPS functionality.



EL image (8 Mpixel)

| Model | Mobile EL basic |
|-----------------|--|
| EL camera | cooled 4 Mpixel NIR camera, FOV 1 x 1m, night time operation |
| EL power supply | for single c-Si panels, up to 60 Volt / 13.3 Ampere |
| EL software | panel based presentation, image stitching, automatic reporting |
| Module types | up to 1000 x 2000 mm with two images (stitched by SW) |
| Main unit | EL power supply, 24" Monitor, high end PC with UPS |
| Measuring head | light weight aluminum frame, foldable, 1040 x 850 x 1040mm when operated |