

**Module ID:** ID20160622083811

**Manufacturer:** MBJ

**Module Type/Description:** INTERSOLAR 238

**Testcenter Serial:** 4005\_Sandra

**Module Judgement:** CLASSD

Job ID: Intersolar\_2016

Address: Intersolar / MesseGelaende

Country / City: DE 81823 Muenchen

## Power

Pmpp @ STC IEC60891: 234.7W

Power mismatch: -1.4% to 238.0W ( 0.0% -> +5.0% )

Tmod / Tref: 27.7C / 25.5C

Flash Time: 100.5ms

Flasher Parameter: C16480N/Mono/195ms

Lowlight Performance: (200)=43.4W,(400)=91.1W,(600)=139.5W,(800)=187.4W

Operator / Date Time: Schraeder 6/22/2016 8:48 AM

## Electrical

Connection Check: Successfull: 8.5A /41.2V

Diode Test: Successfull: 10.0A /2.3V

GND Bond Tests: PASSED 15mOhm Top  
PASSED 11mOhm Right  
PASSED 7mOhm Bottom

GND Parameter / Return: 30.00A 1.0s / Left

HiPot Test: PASSED 6.0kV 1.0s / 0.010mA

Insulation Resistance Test: PASSED 1000.0V 1.0s / >1000MOhm

## Electroluminescence

Cell Judgement Count: 3 very critical: >=20% cell area affected  
44 critical: <20% cell area affected  
4 uncritical: no cell area affected  
0 other EL abnormalities

No Judgment Count: 9

EL Parameter: 1.7s / 43.1V / 12.0A / Cell / Assisted no Setup

Operator / Date Time: Schraeder 6/22/2016 8:38 AM

Reviewed / Date Time: Schraeder 7/18/2016 1:45 PM

## Thermography

Thermography Images: 6 dT max.: 12.7°C

Operator / Date Time: Schraeder 7/18/2016 1:42 PM

## Photography

Images: 3

Operator / Date Time: Schraeder 6/23/2016 1:11 PM

**Module ID:** **ID20160622083811**

**Comment**

Operator / Date Time: Schraeder 6/22/2016 8:58 AM

Judgment Comment:

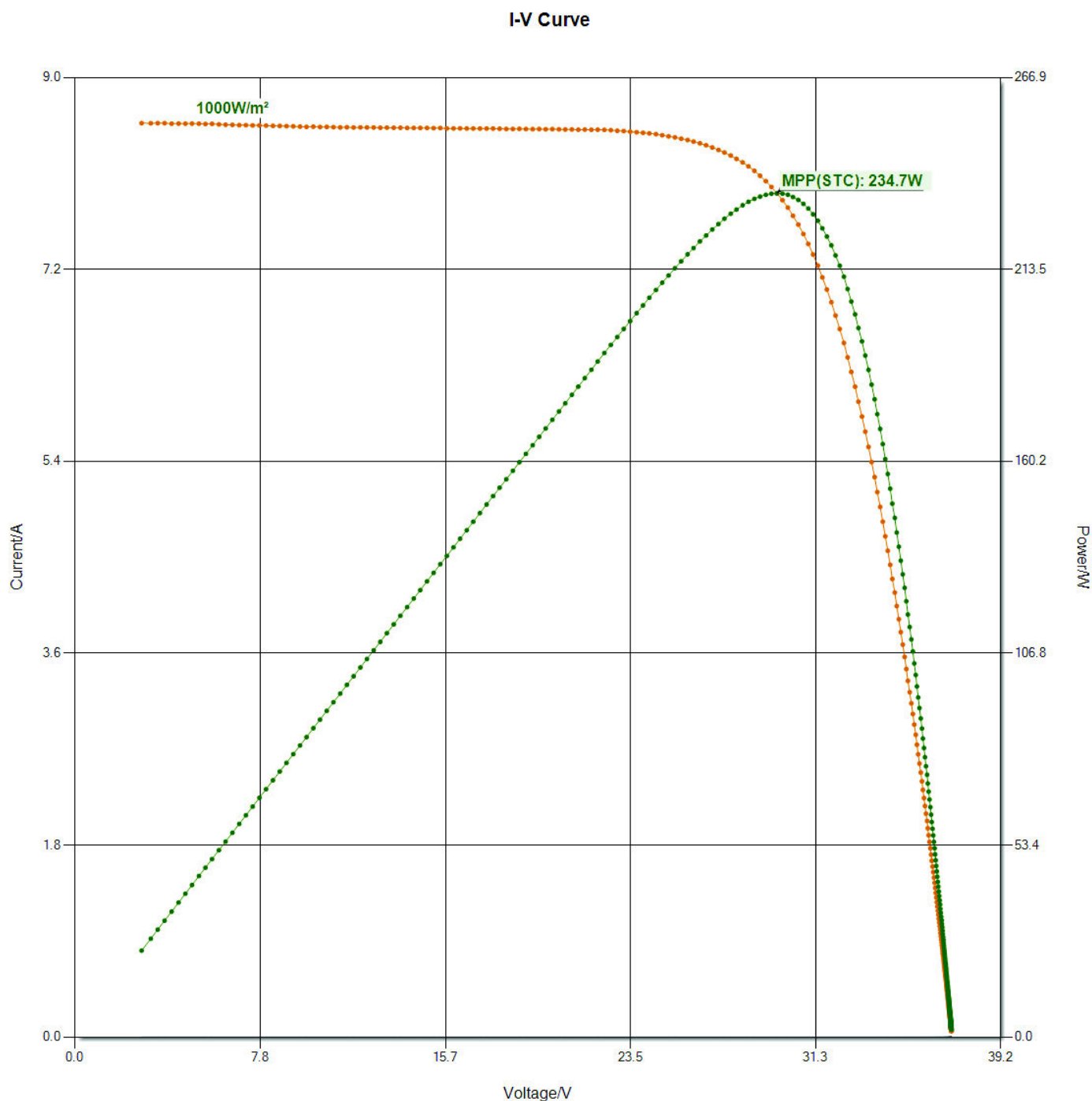
Due to several critical cracks the panel is D class judged

Module Comment:

Strongly cracked panel, several critical cells.

Module ID: ID20160622083811

Type ID: MBJ / INTERSOLAR 238



	Pmpp[W]	Impp[A]	Umpp[V]	Isc[A]	Uoc[V]	Irr[W/m2]	FF[%]
IEC60891 STC	234.7	7.91	29.67	8.56	37.10	1000.0	73.9
Measured	230.6	7.85	29.36	8.50	36.74	991.9	73.8

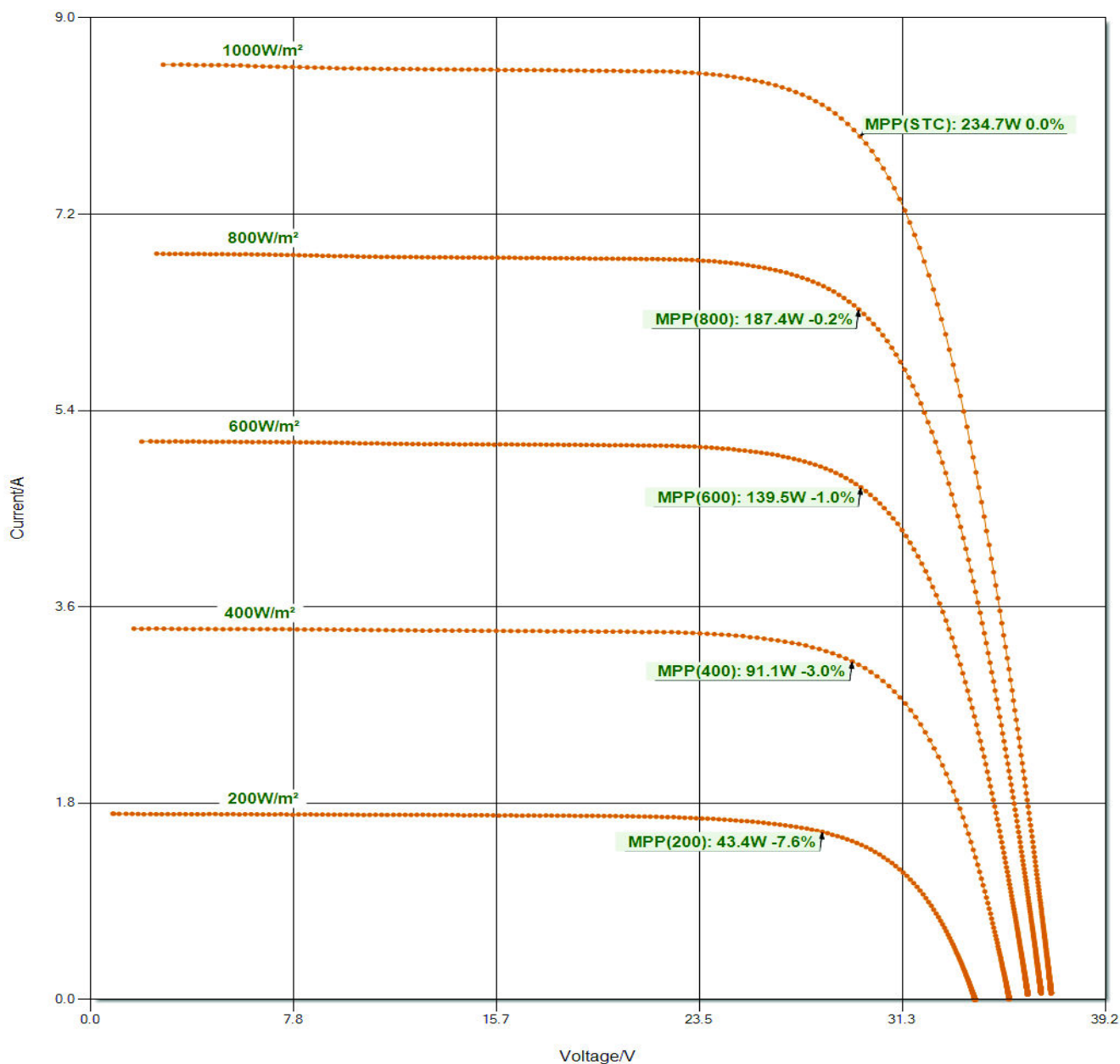
  

Tmod[C]:27.7	Tref[C]:25.5	Tdev[C]:26.1	Tout[C]:21.7	T[ms]:100.5
Type:Mono	alpha[%]:0.070	beta[%]:-0.350	IEC aICF:0.060	IEC Rs:0.60
Software:527m				

Module ID: ID20160622083811

Type ID: MBJ / INTERSOLAR 238

I-V Curve

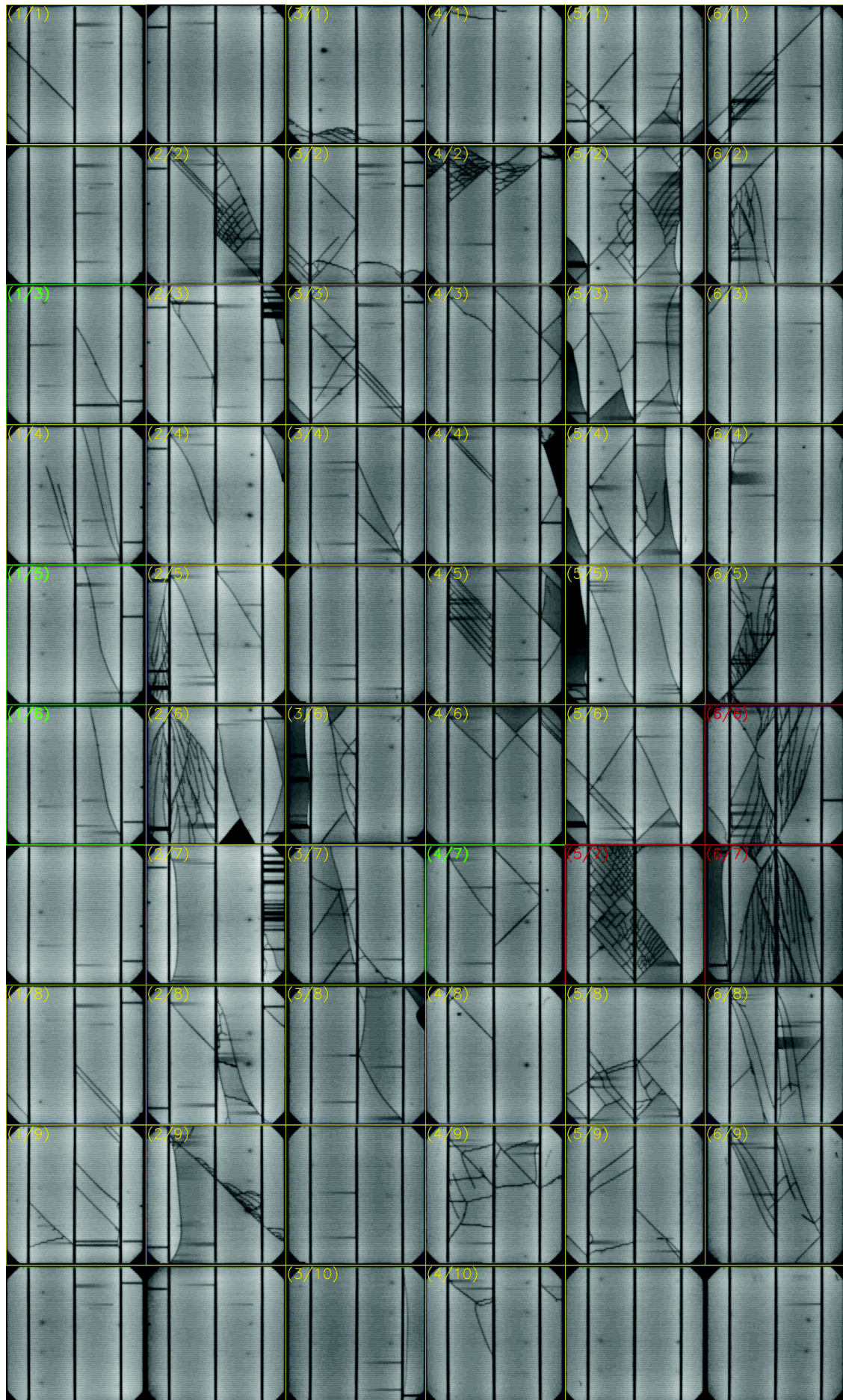


IEC60891 Irr [W/m2]	200	400	600	800	1000
IEC60891 Pmpp [W]	43.4	91.1	139.5	187.4	234.7
Module Eff [%]	13.5	14.2	14.5	14.6	14.7
Norm. Delta [%]	-7.6	-3.0	-1.0	-0.2	0.0

Measured [W/m2]      197.4      394.7      591.4      791.7      991.9  
Module Width/Height (Portrait) [mm]:982\*1630



# Electroluminescence for ID20160622083811



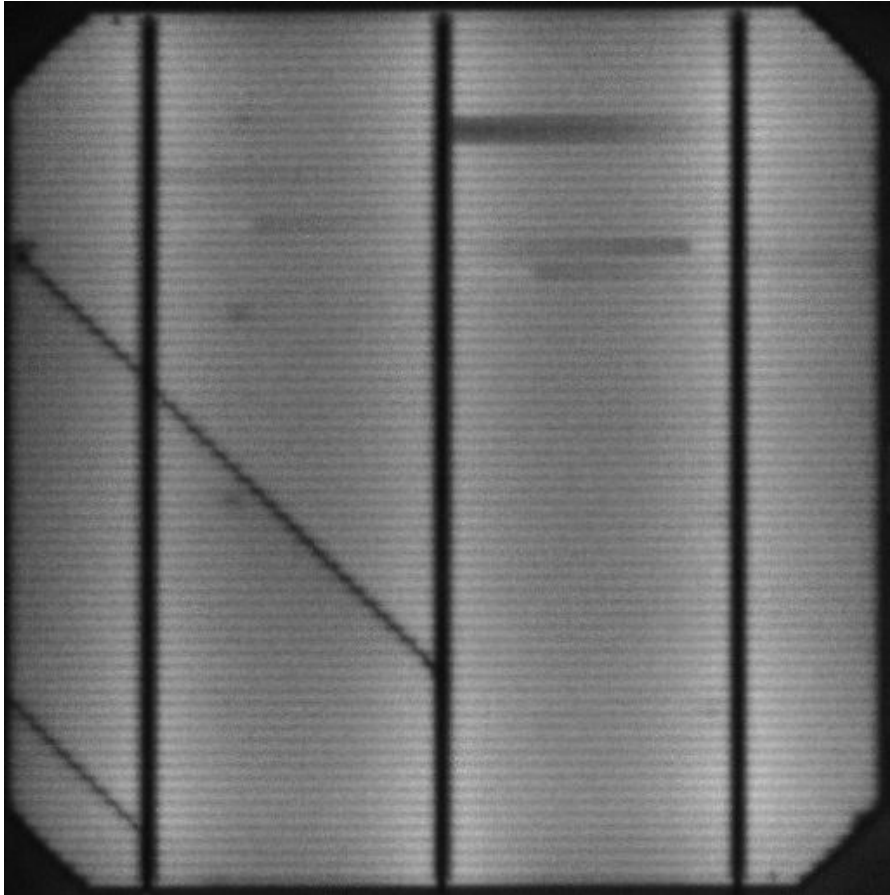
Current/A: 12.010  
Exposure Time [ms]: 1700

Voltage/V: 43.120  
Schraeder 6/22/2016 8:38 AM



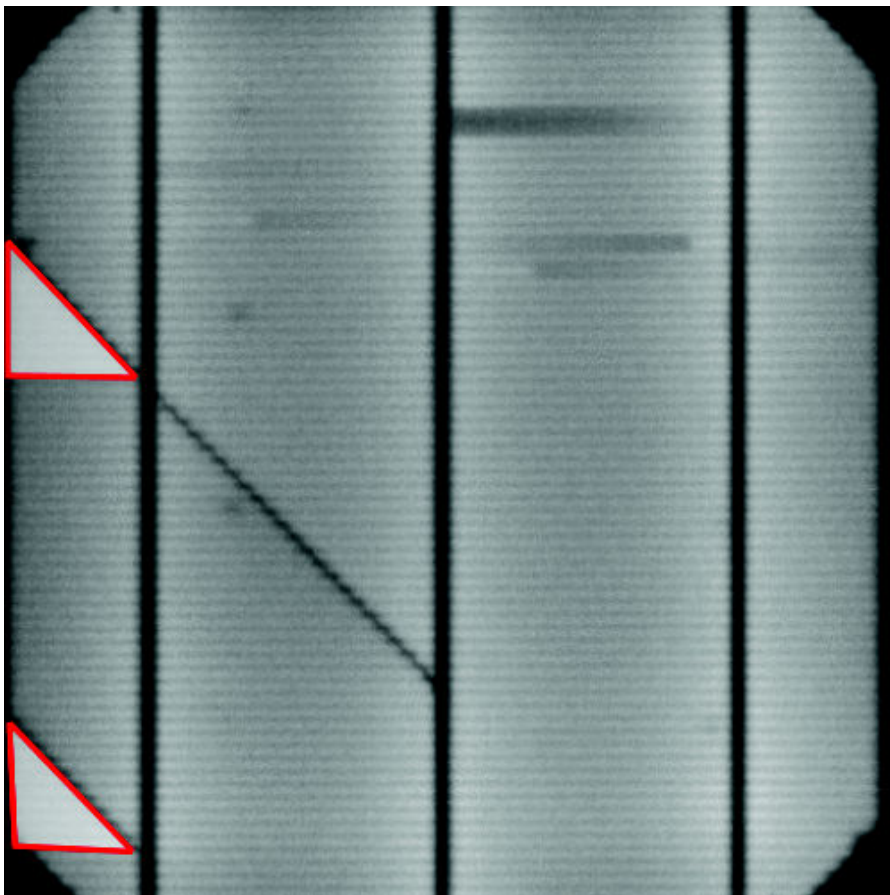
## EL details for ID20160622083811

EL Image of Cell (1/1)



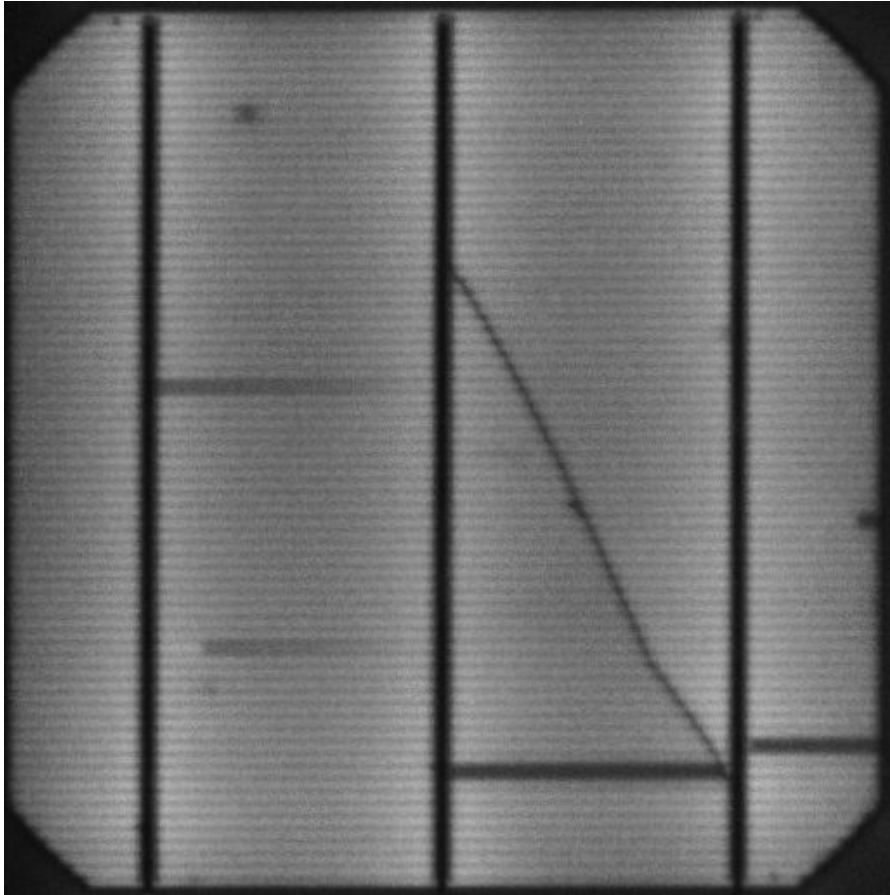
critical: <20% cell area affected

Affected Area of Cell (1/1): 1.91%



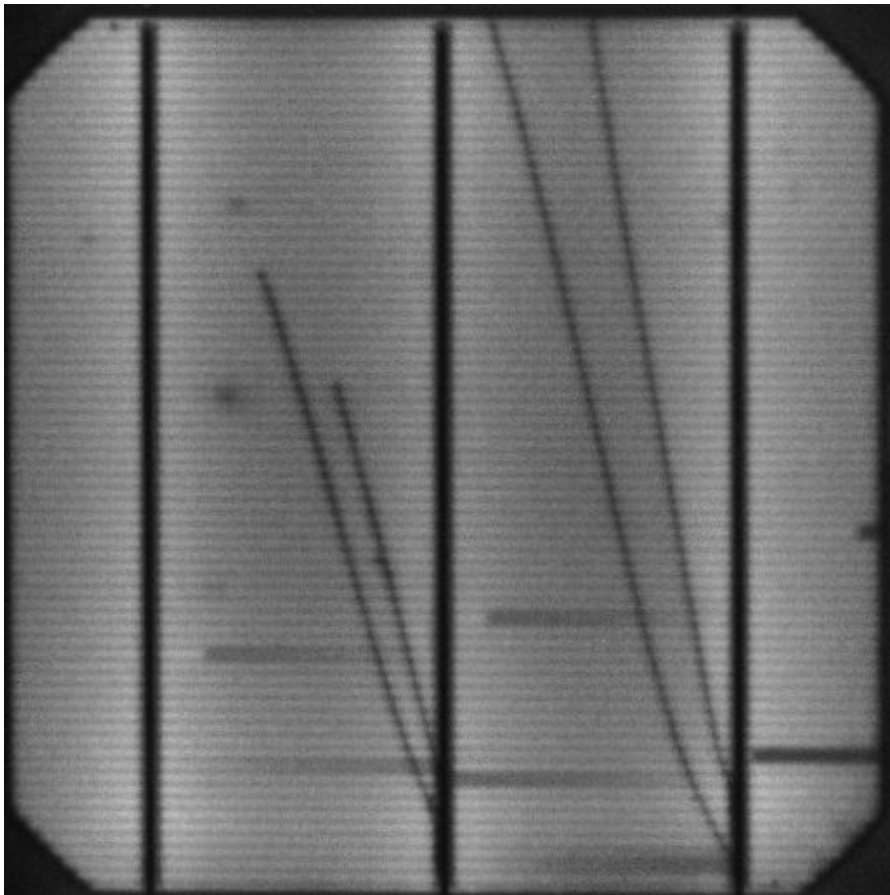
## EL details for ID20160622083811

EL Image of Cell (1/3)



uncritical: no cell area affected

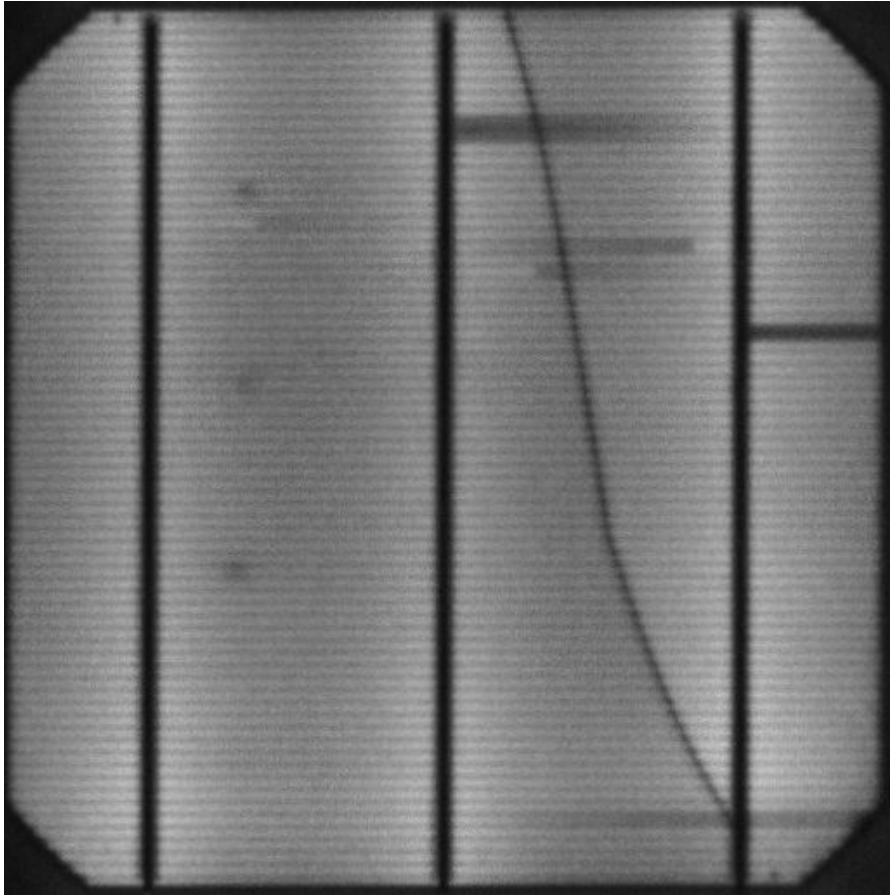
EL Image of Cell (1/4)



critical: <20% cell area affected

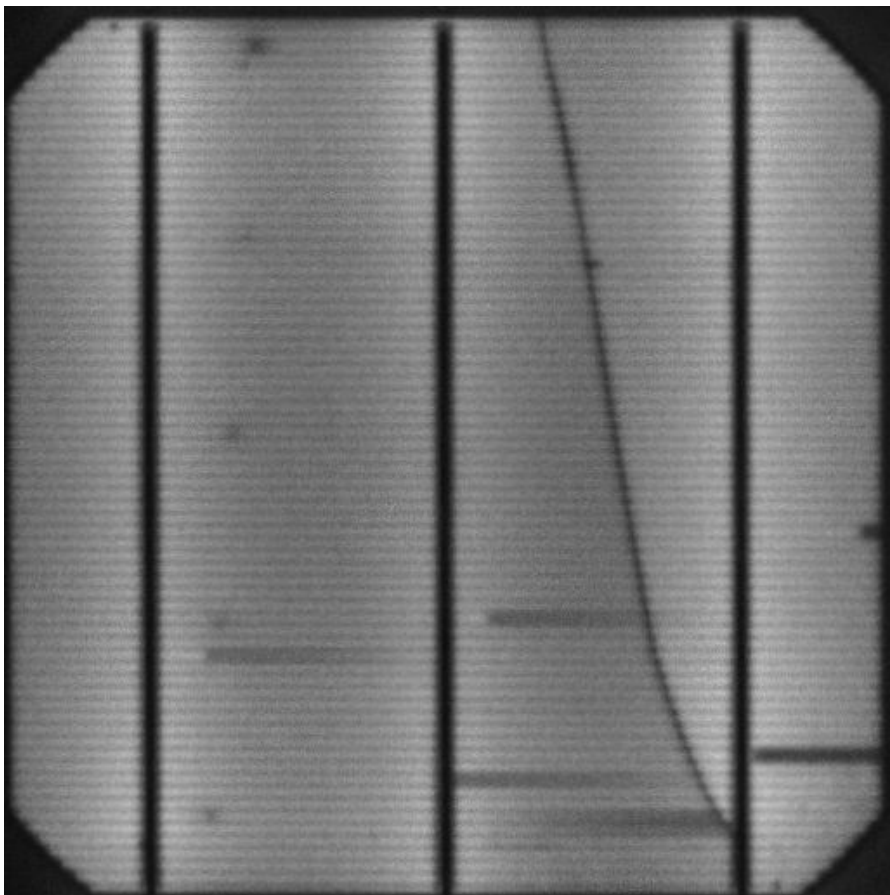
## EL details for ID20160622083811

EL Image of Cell (1/5)



uncritical: no cell area affected

EL Image of Cell (1/6)

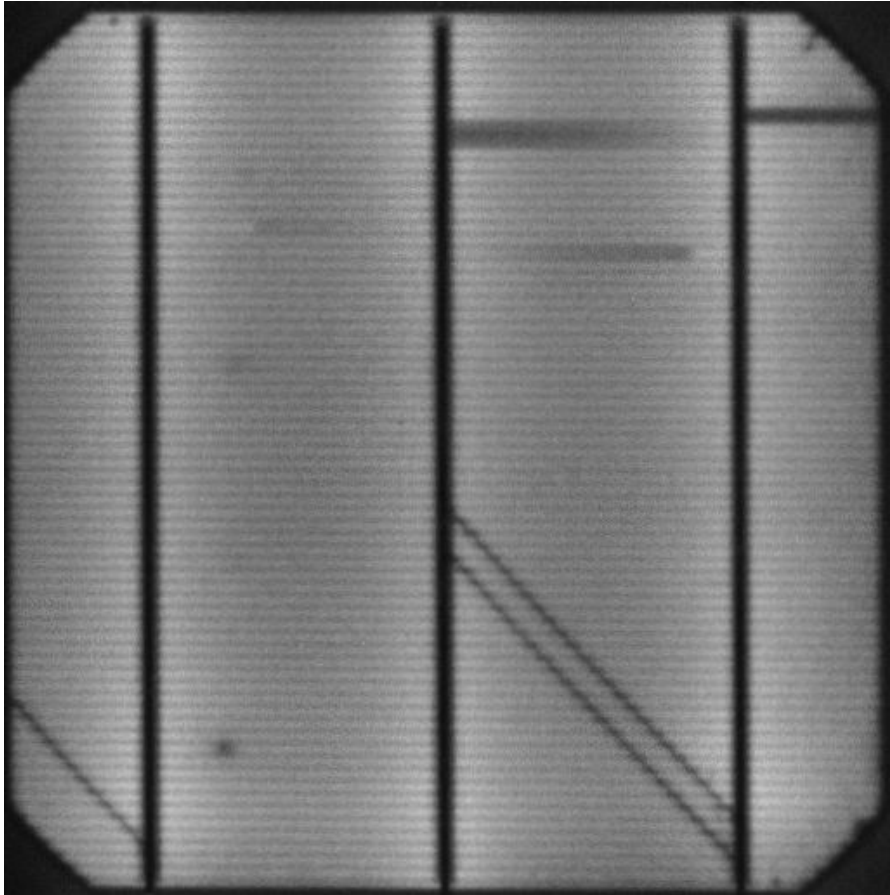


uncritical: no cell area affected



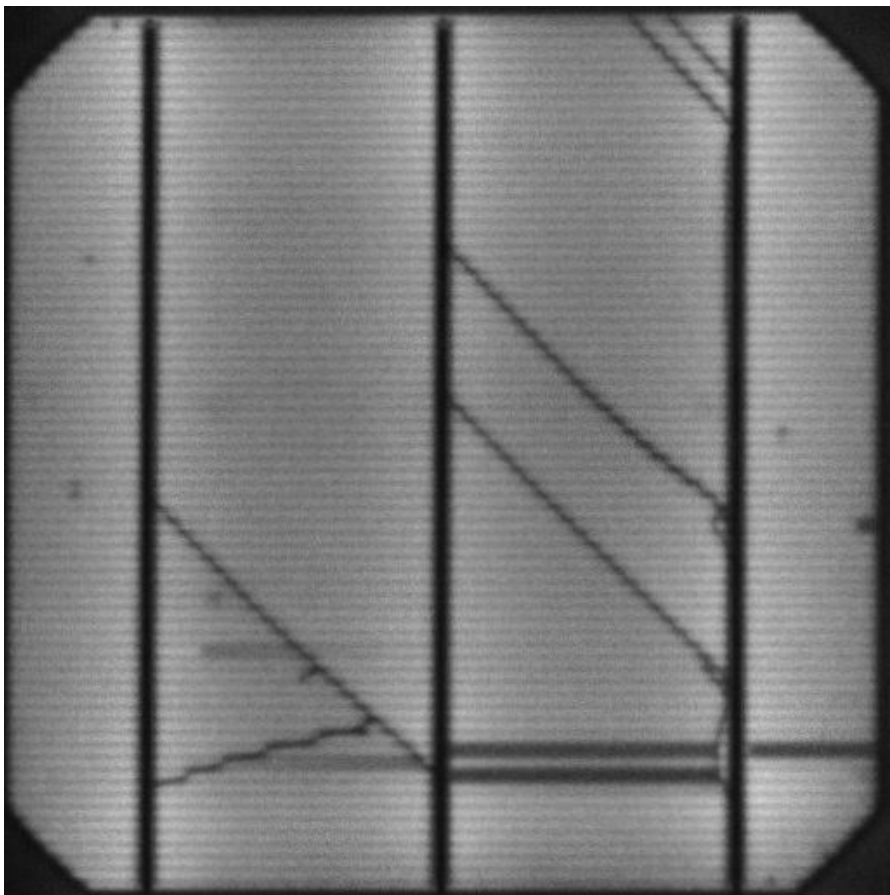
## EL details for ID20160622083811

EL Image of Cell (1/8)



critical: <20% cell area affected

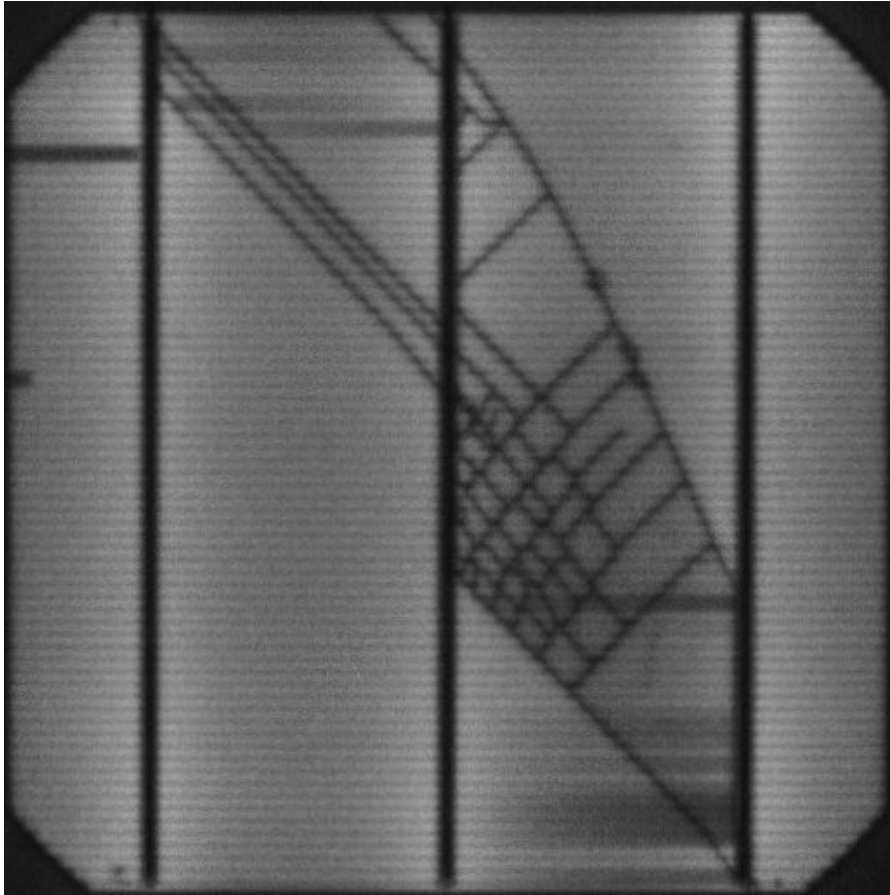
EL Image of Cell (1/9)



critical: <20% cell area affected

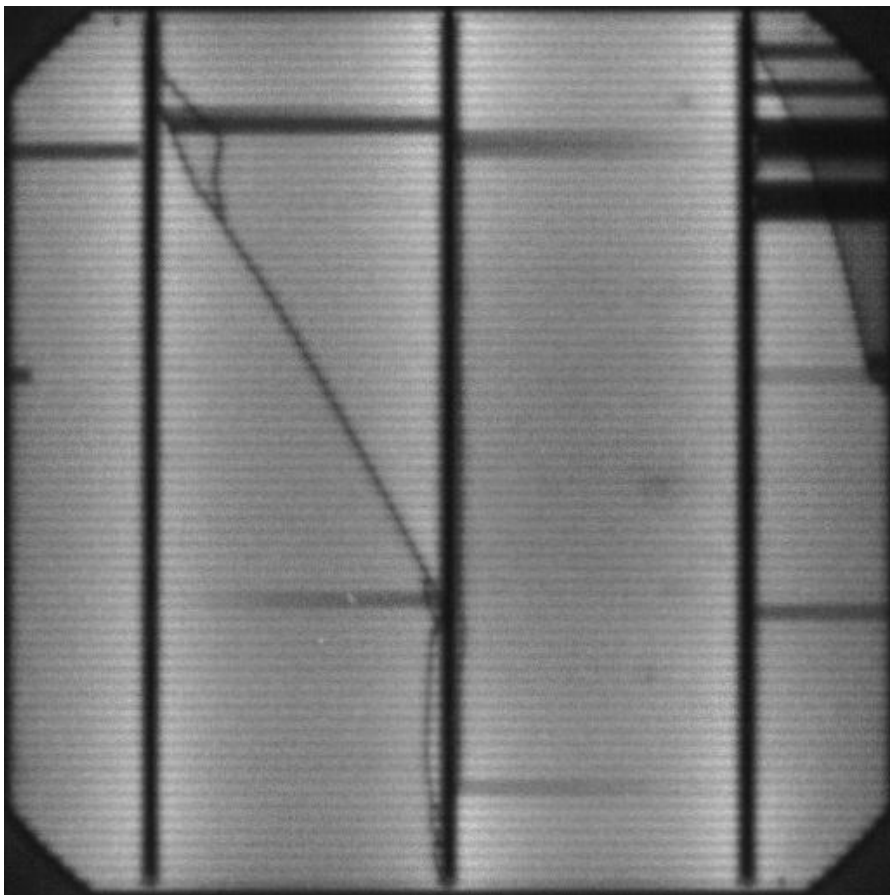
## EL details for ID20160622083811

EL Image of Cell (2/2)



critical: <20% cell area affected

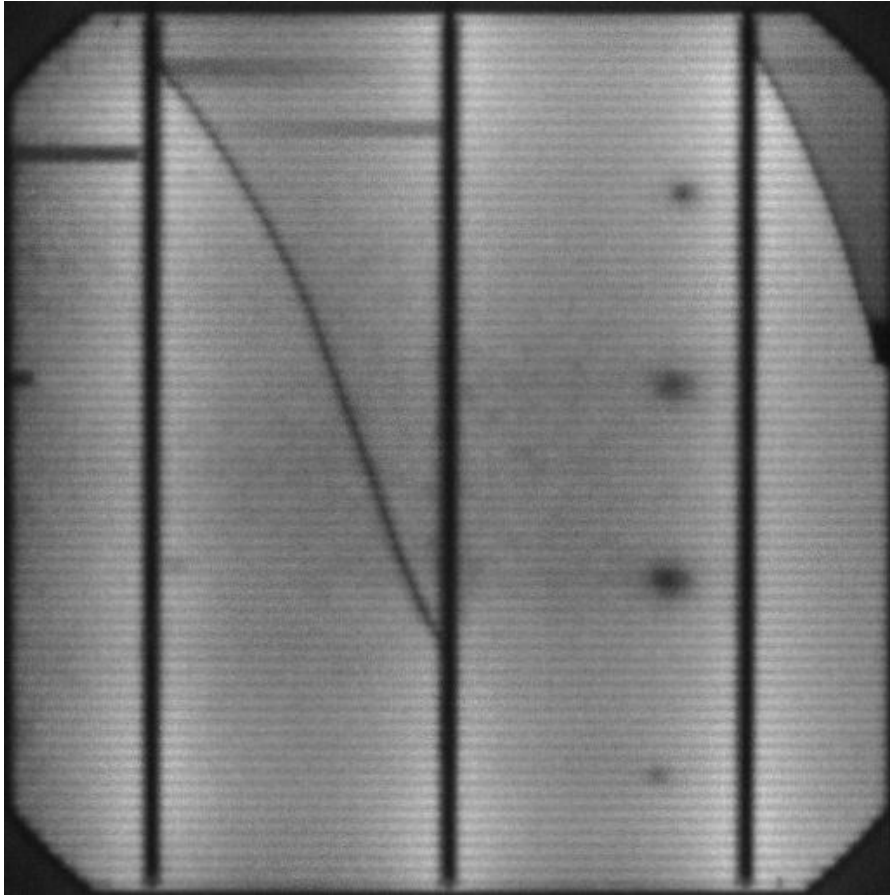
EL Image of Cell (2/3)



critical: <20% cell area affected

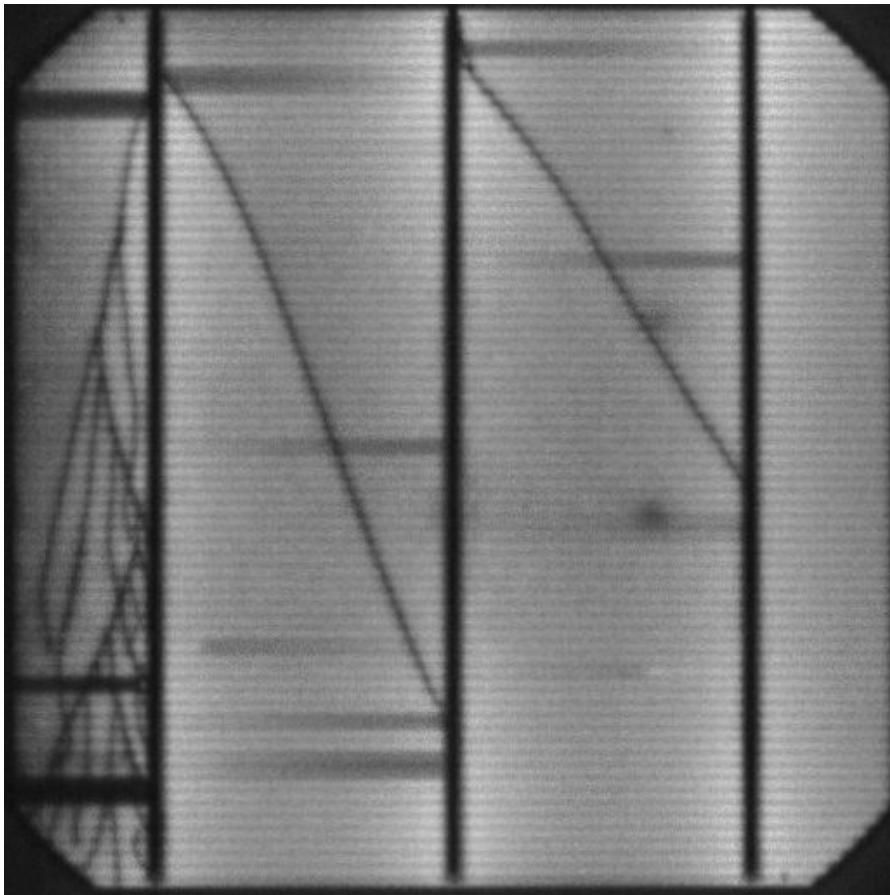
## EL details for ID20160622083811

EL Image of Cell (2/4)



critical: <20% cell area affected

EL Image of Cell (2/5)

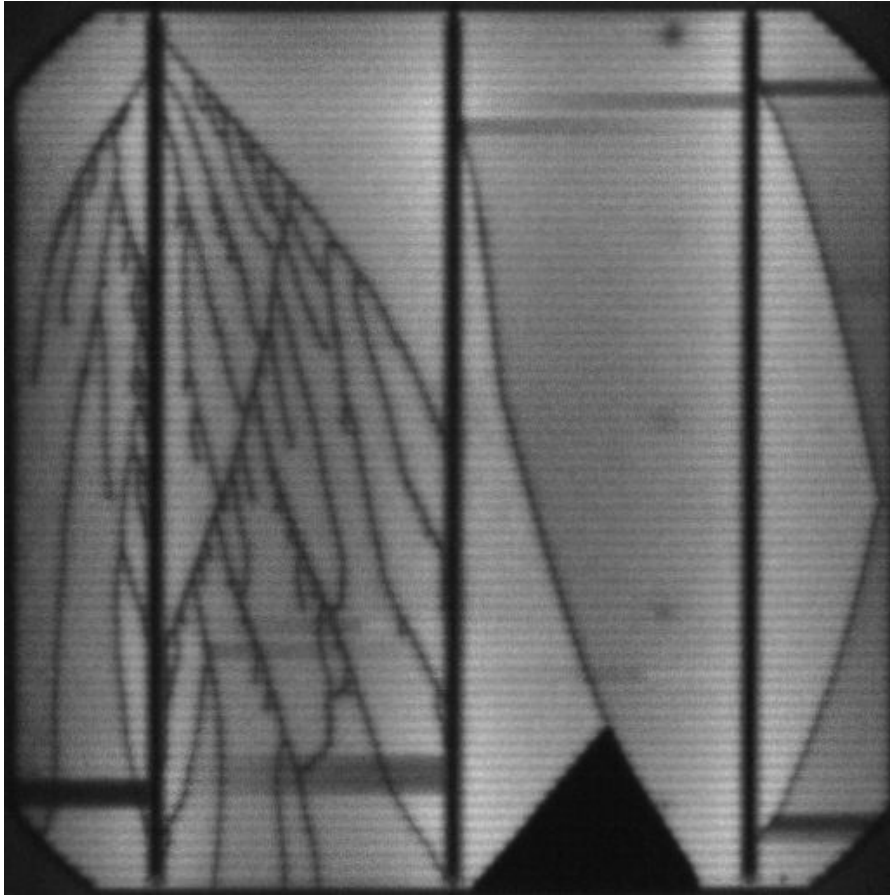


critical: <20% cell area affected



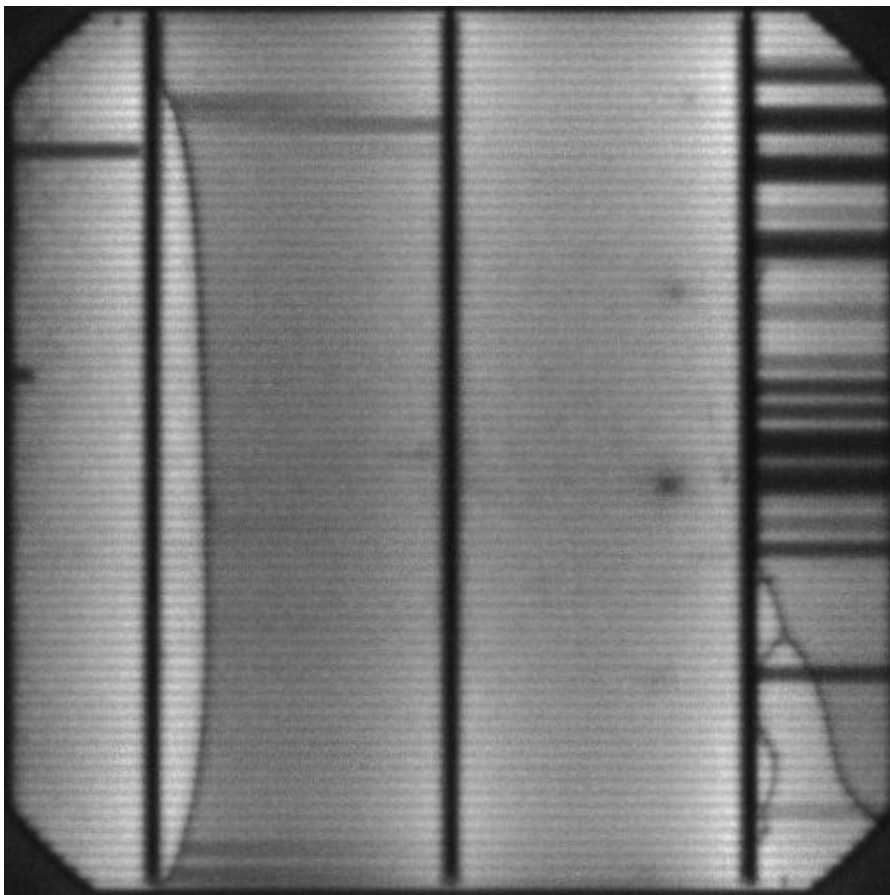
## EL details for ID20160622083811

EL Image of Cell (2/6)



critical: <20% cell area affected

EL Image of Cell (2/7)

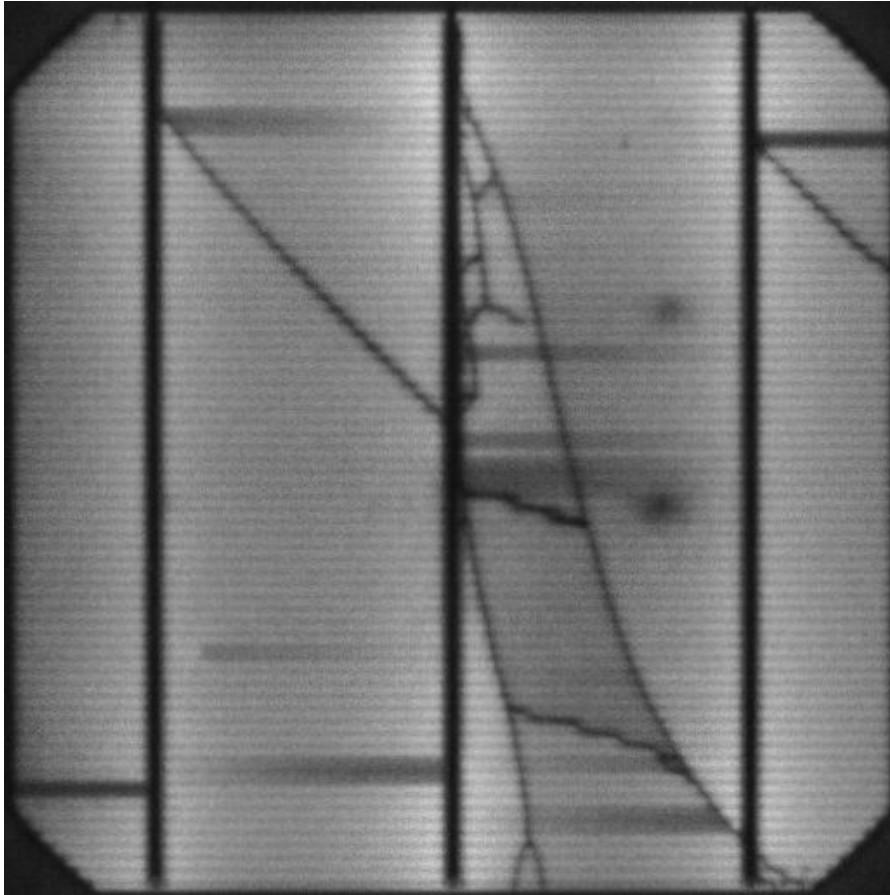


critical: <20% cell area affected



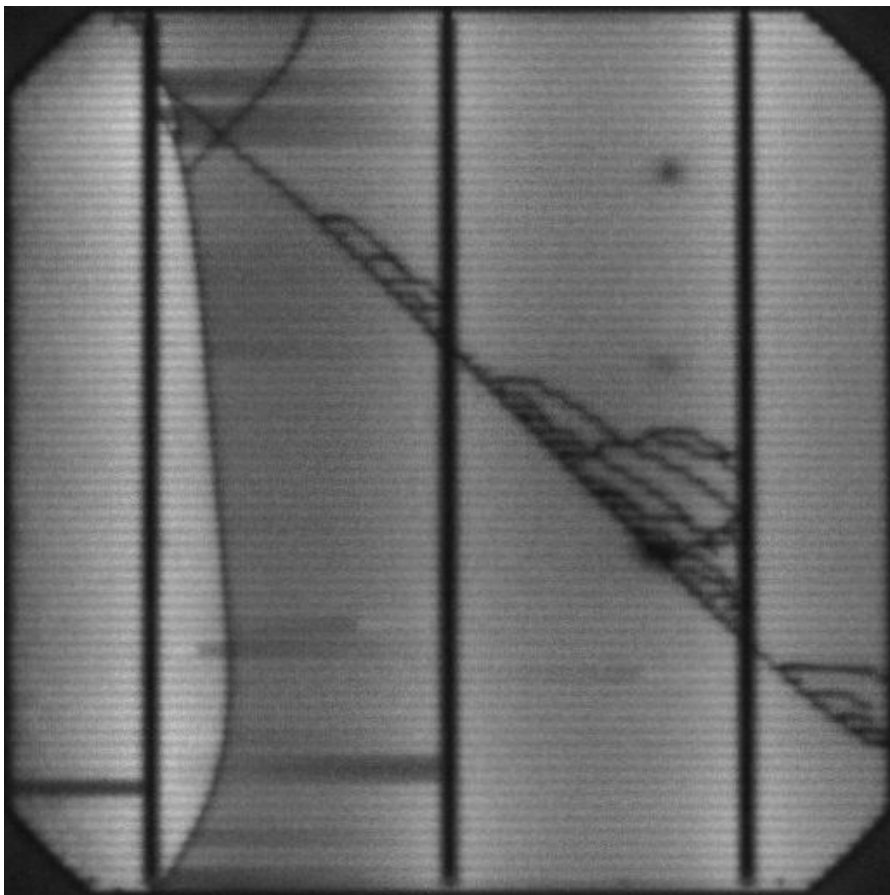
## EL details for ID20160622083811

EL Image of Cell (2/8)



critical: <20% cell area affected

EL Image of Cell (2/9)



critical: <20% cell area affected

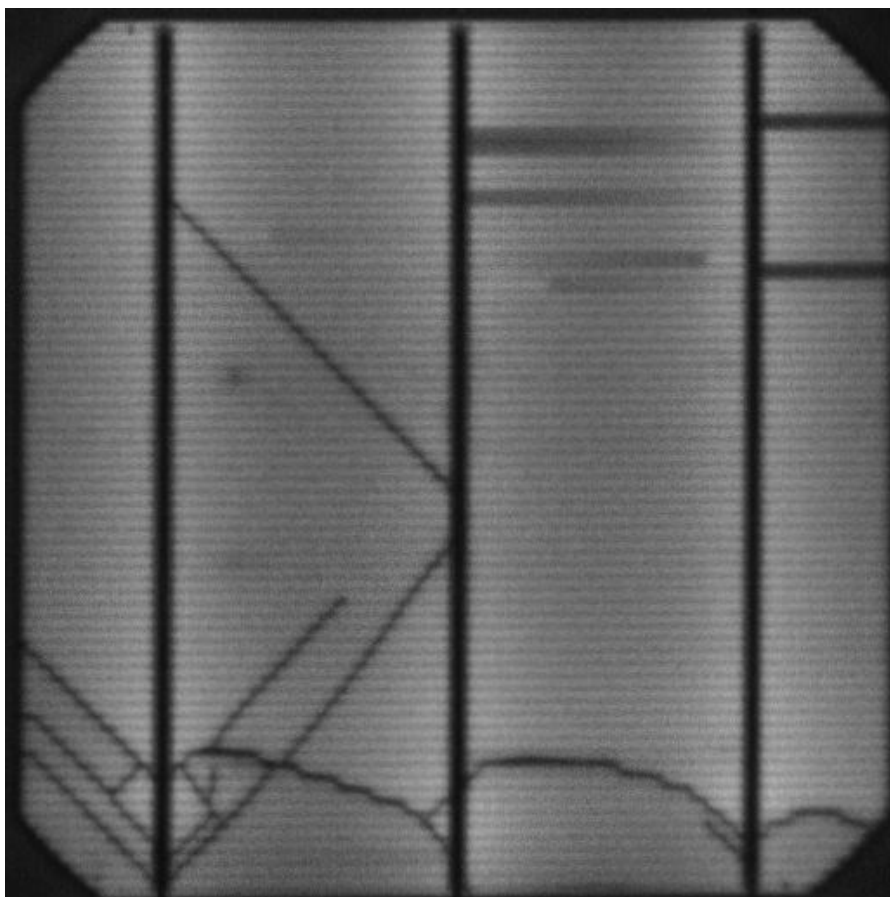
## EL details for ID20160622083811

EL Image of Cell (3/1)



critical: <20% cell area affected

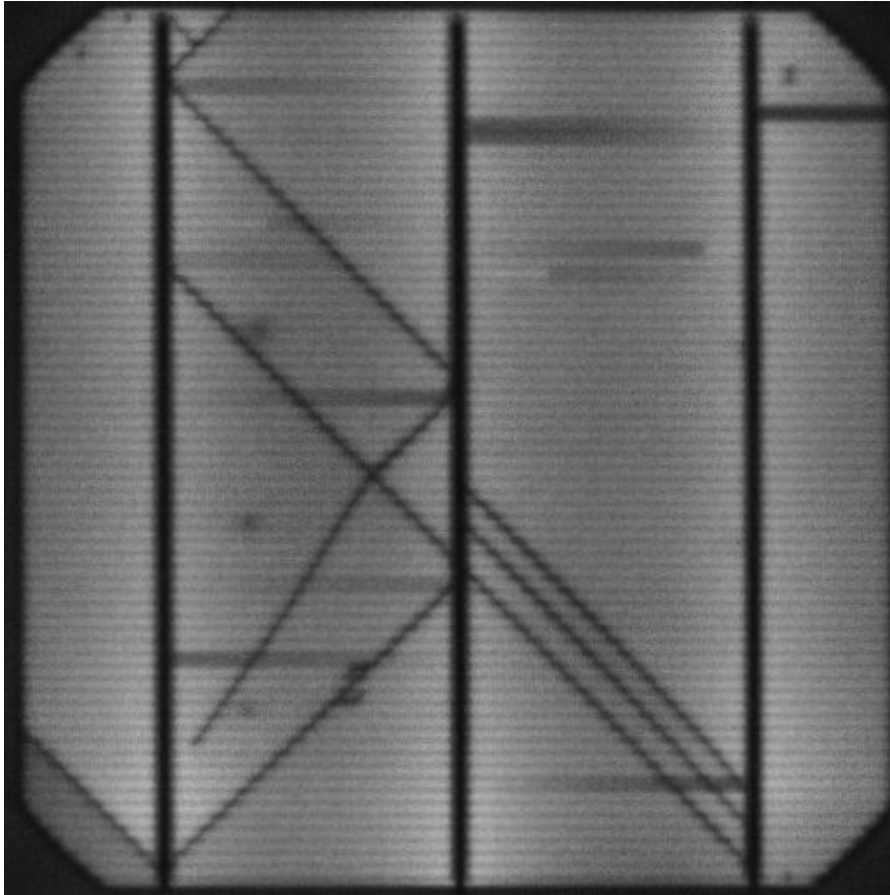
EL Image of Cell (3/2)



critical: <20% cell area affected

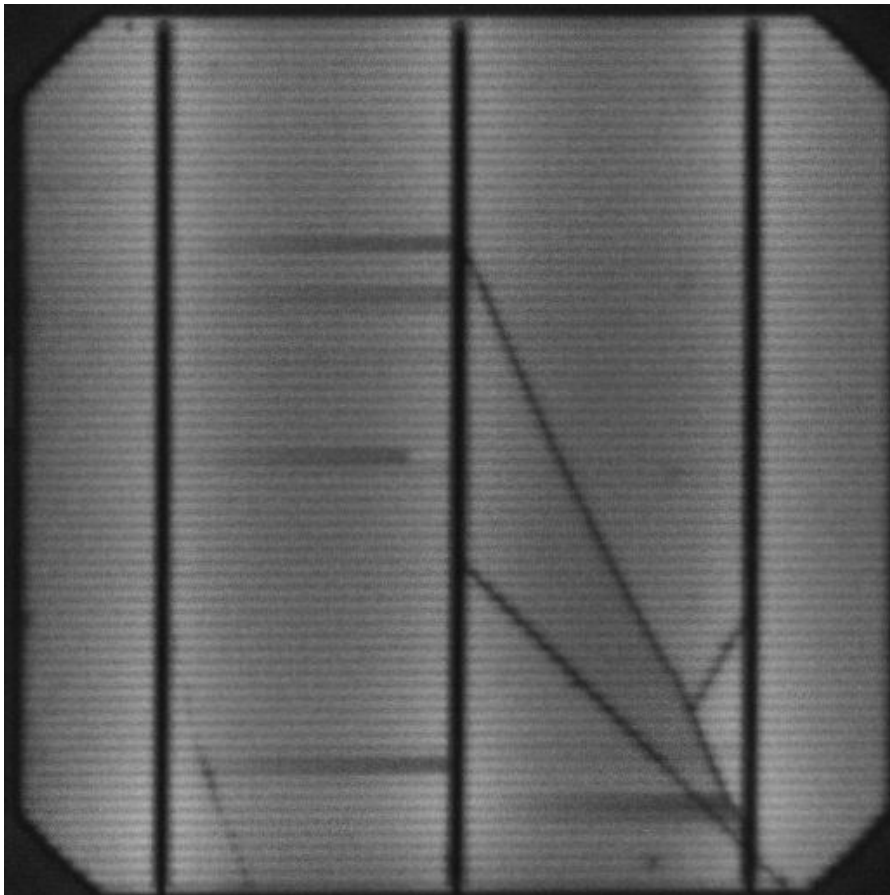
## EL details for ID20160622083811

EL Image of Cell (3/3)



critical: <20% cell area affected

EL Image of Cell (3/4)

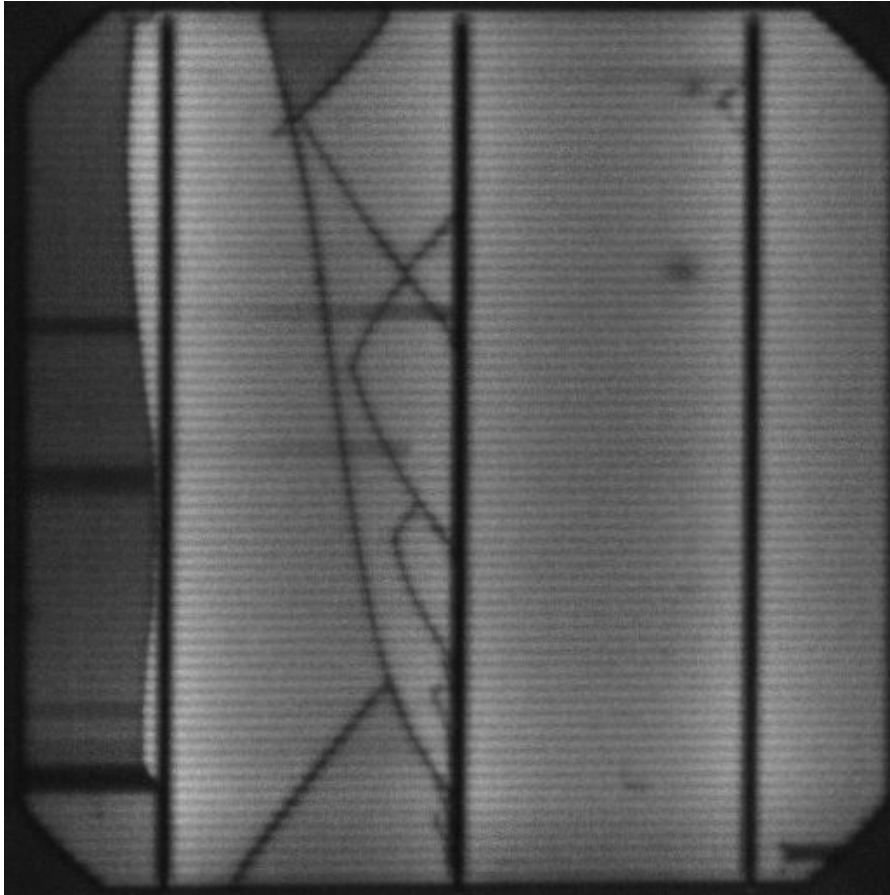


critical: <20% cell area affected



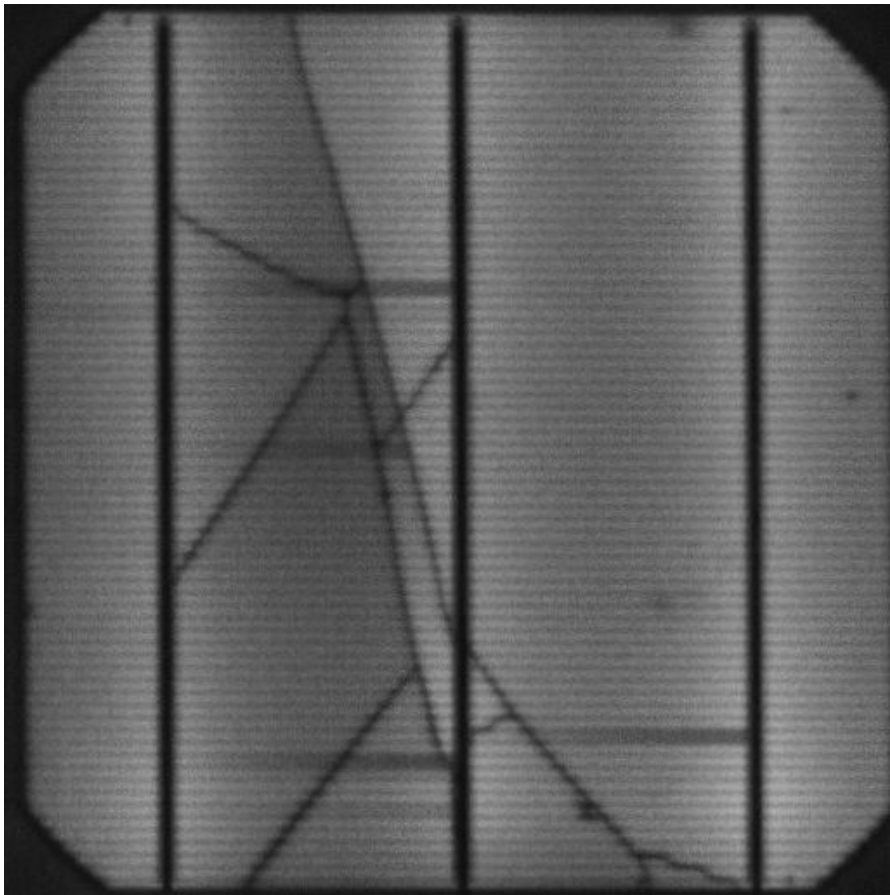
## EL details for ID20160622083811

EL Image of Cell (3/6)



critical: <20% cell area affected

EL Image of Cell (3/7)

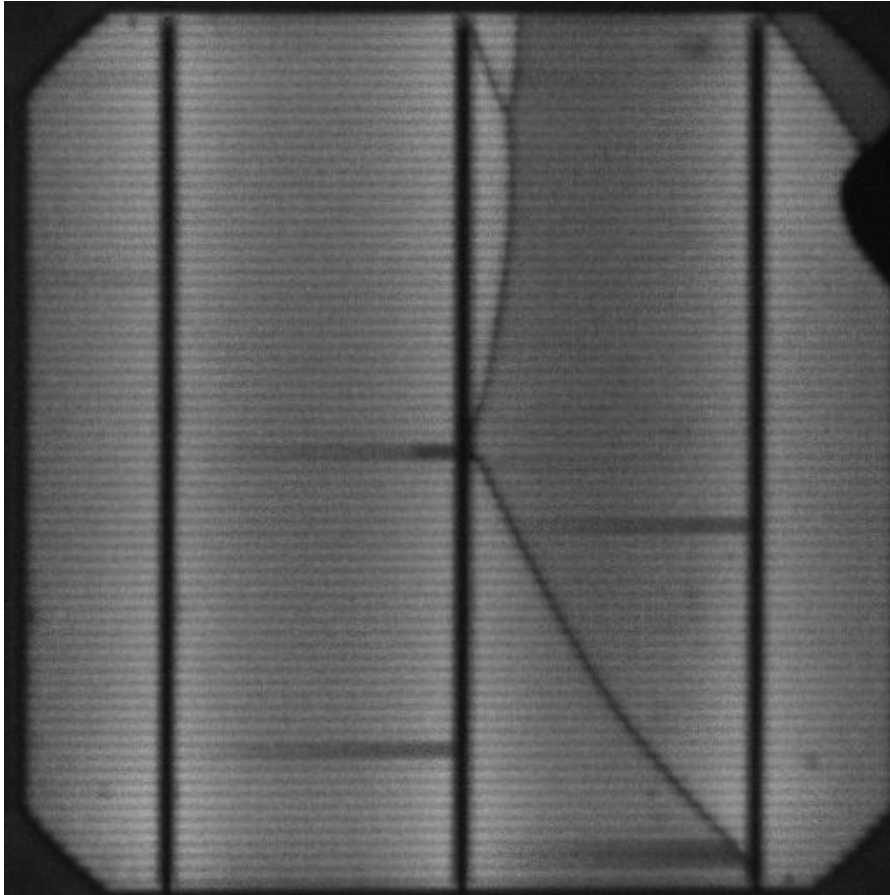


critical: <20% cell area affected



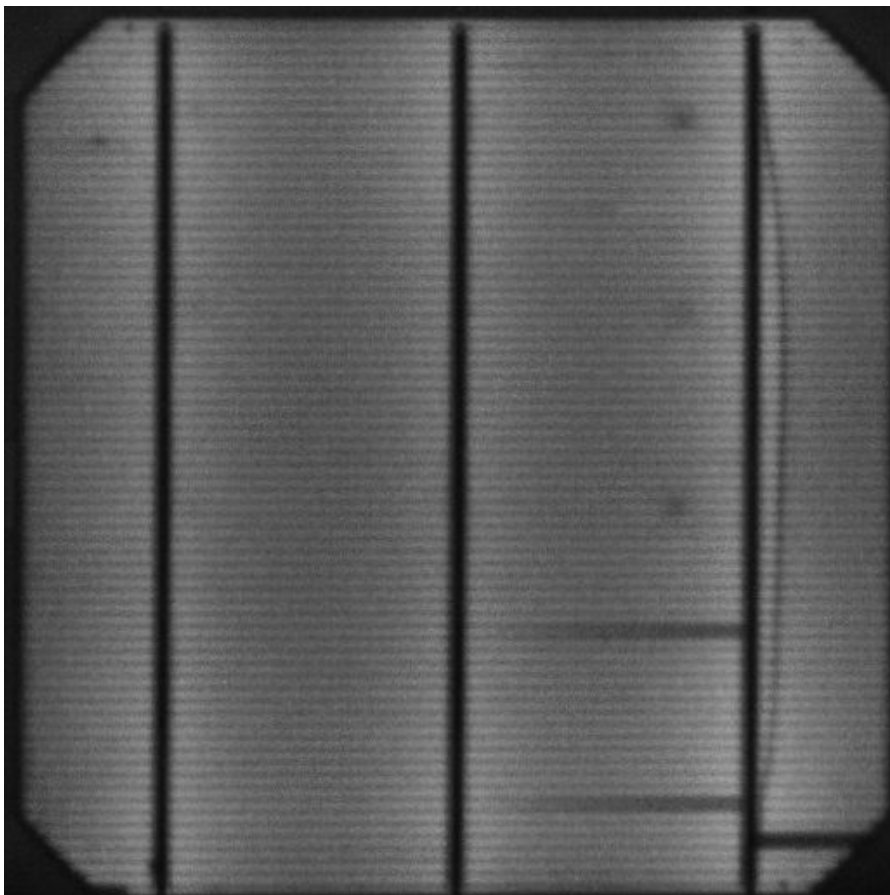
## EL details for ID20160622083811

EL Image of Cell (3/8)



critical: <20% cell area affected

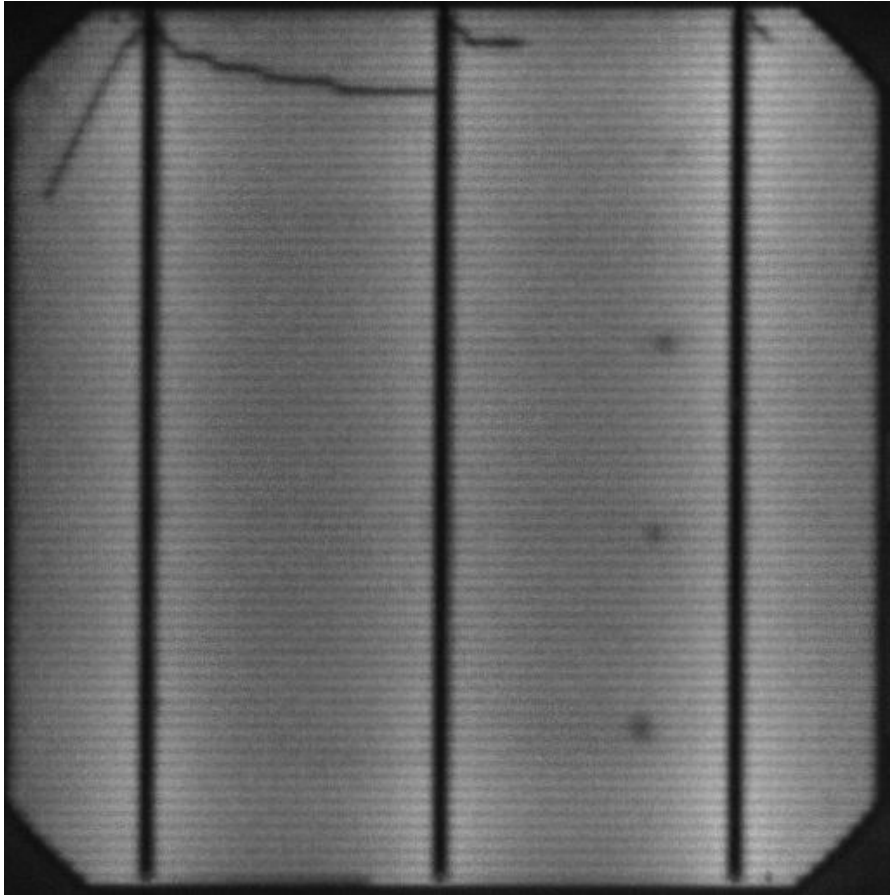
EL Image of Cell (3/10)



critical: <20% cell area affected

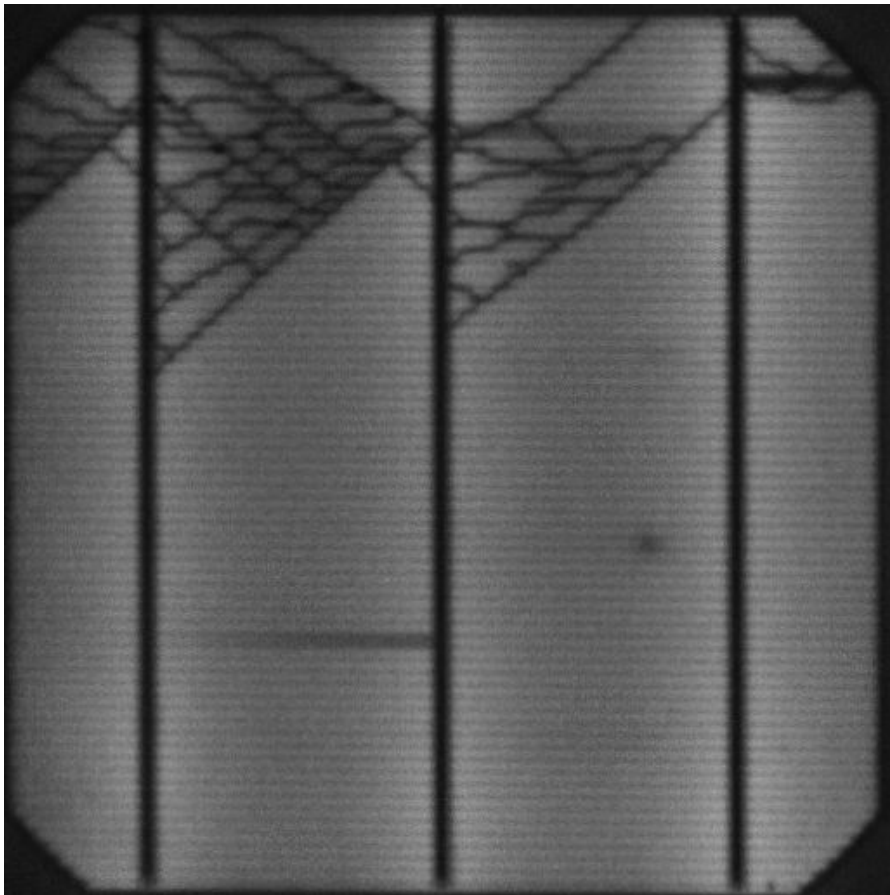
## EL details for ID20160622083811

EL Image of Cell (4/1)



critical: <20% cell area affected

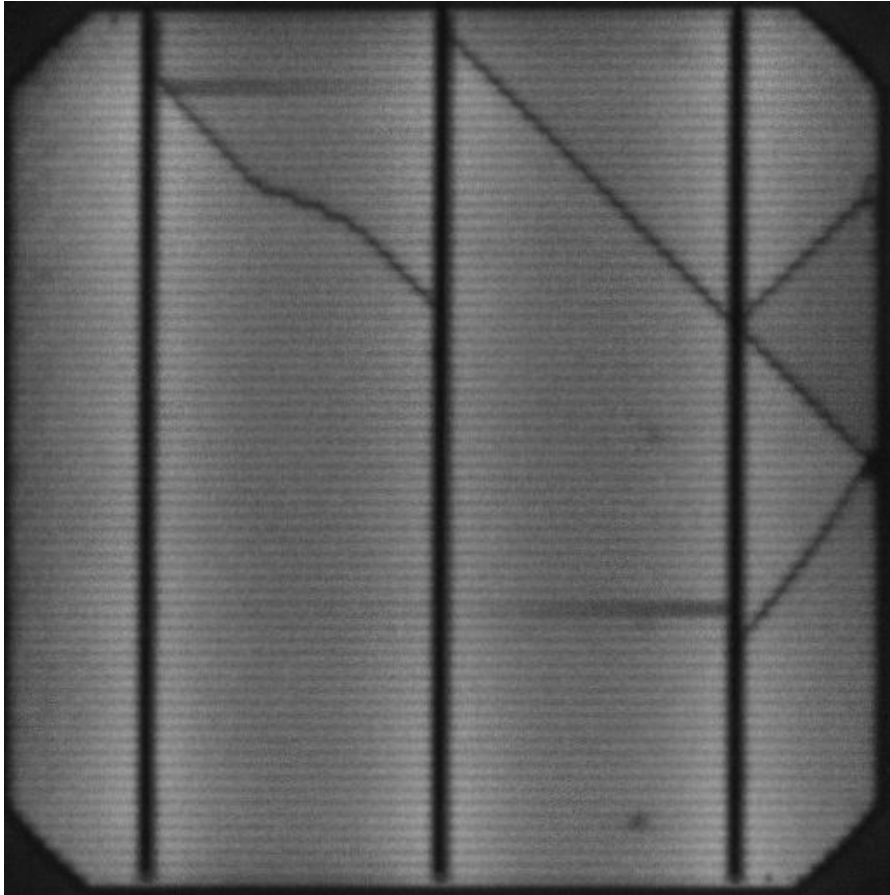
EL Image of Cell (4/2)



critical: <20% cell area affected

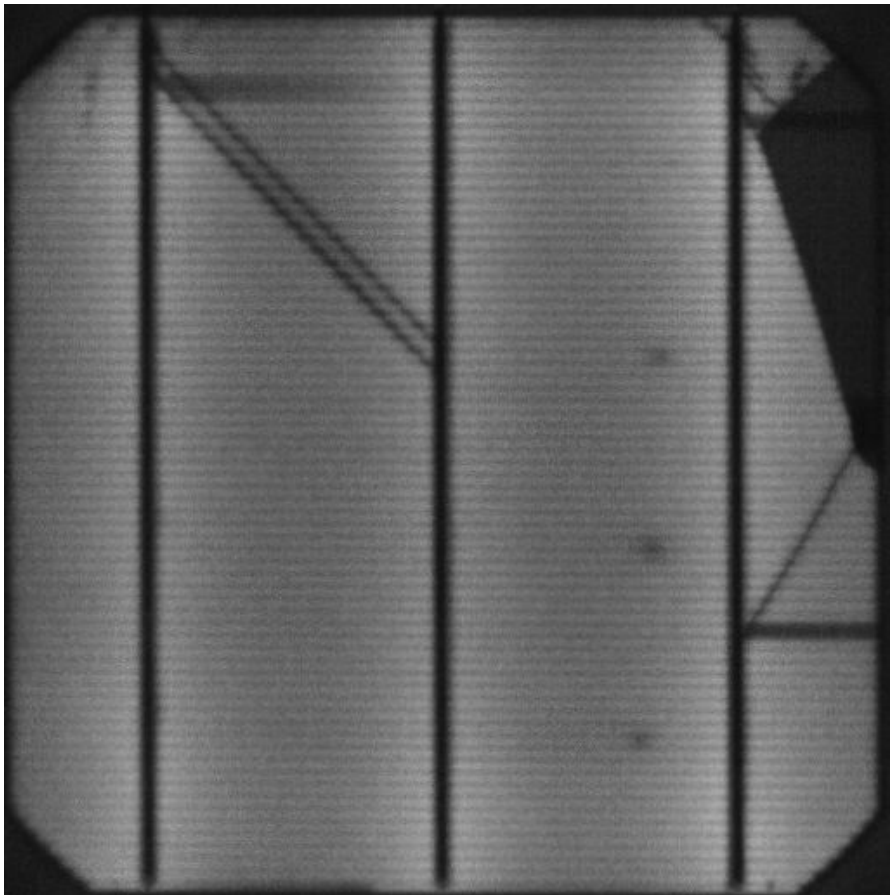
## EL details for ID20160622083811

EL Image of Cell (4/3)



critical: <20% cell area affected

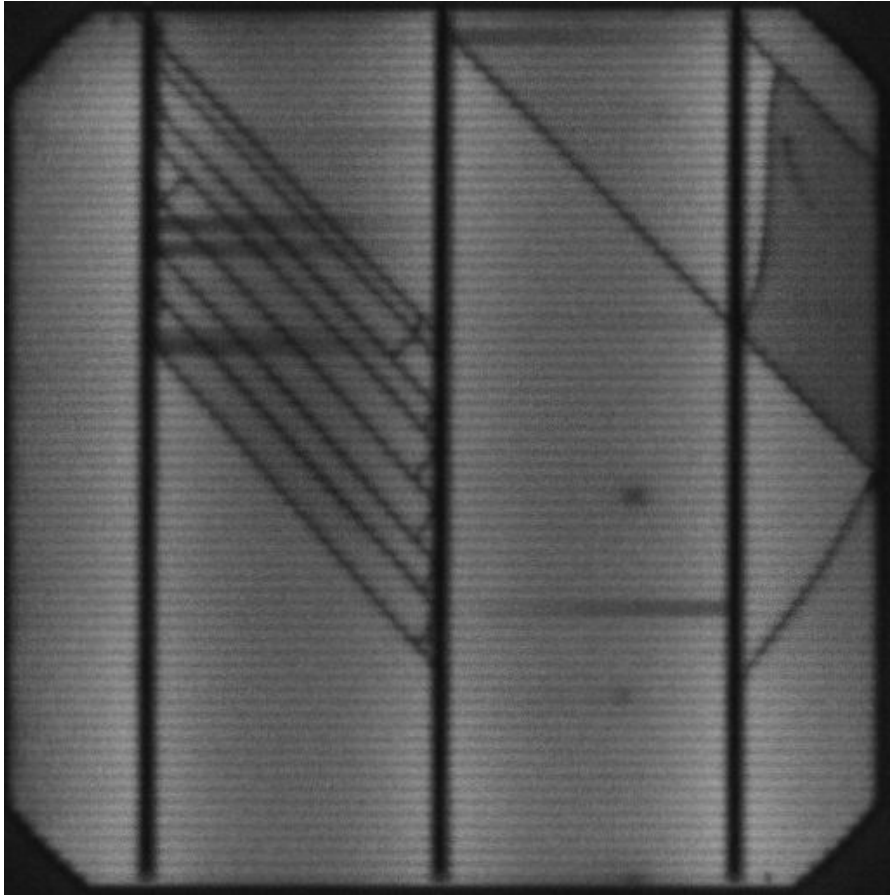
EL Image of Cell (4/4)



critical: <20% cell area affected

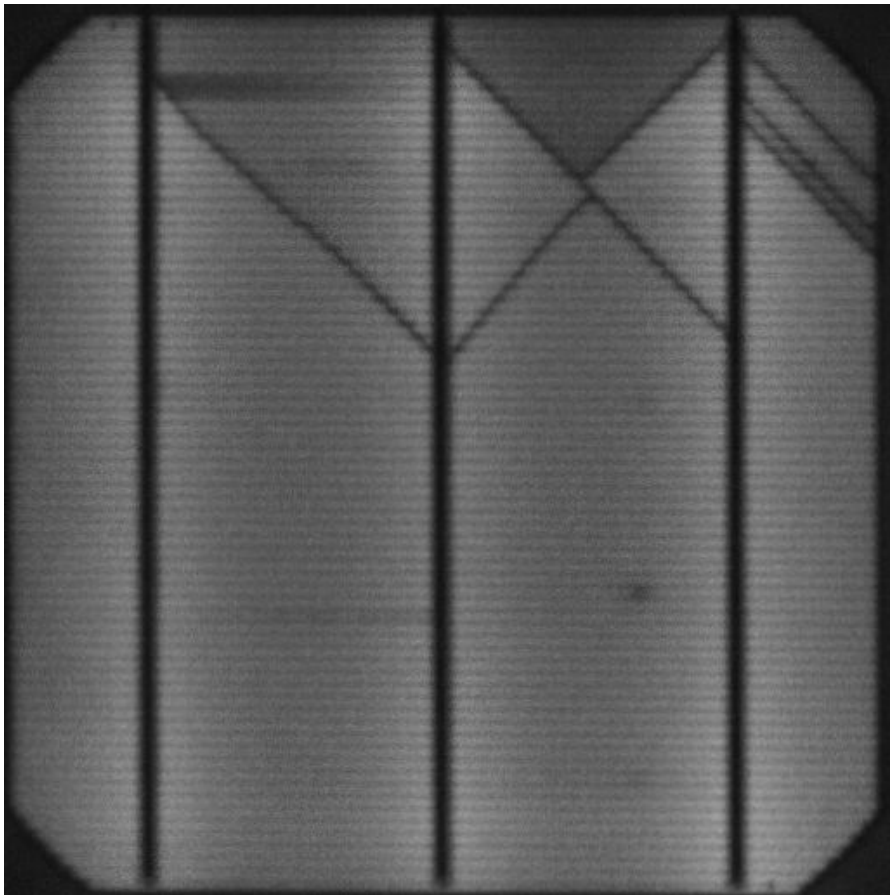
## EL details for ID20160622083811

EL Image of Cell (4/5)



critical: <20% cell area affected

EL Image of Cell (4/6)

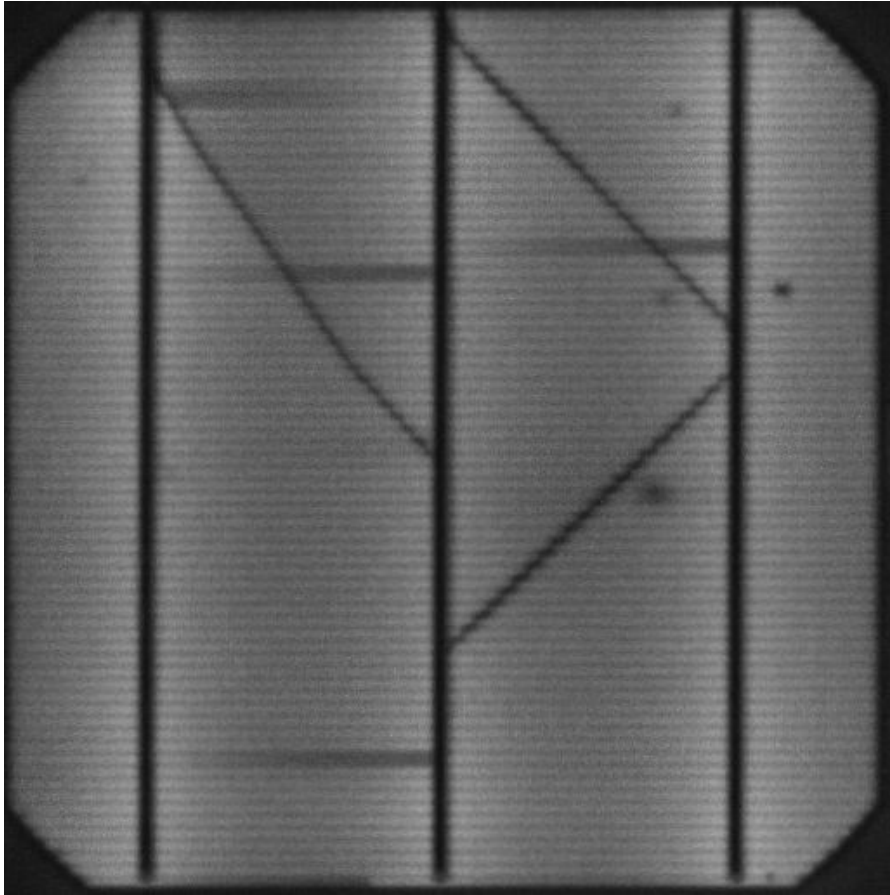


critical: <20% cell area affected



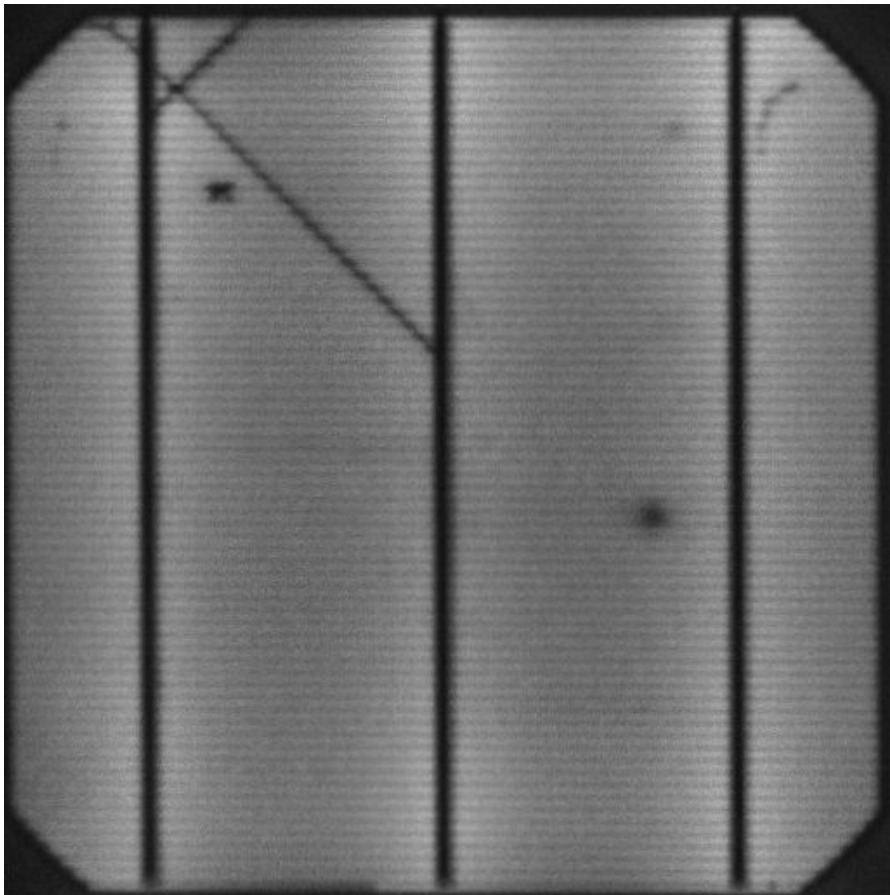
## EL details for ID20160622083811

EL Image of Cell (4/7)



uncritical: no cell area affected

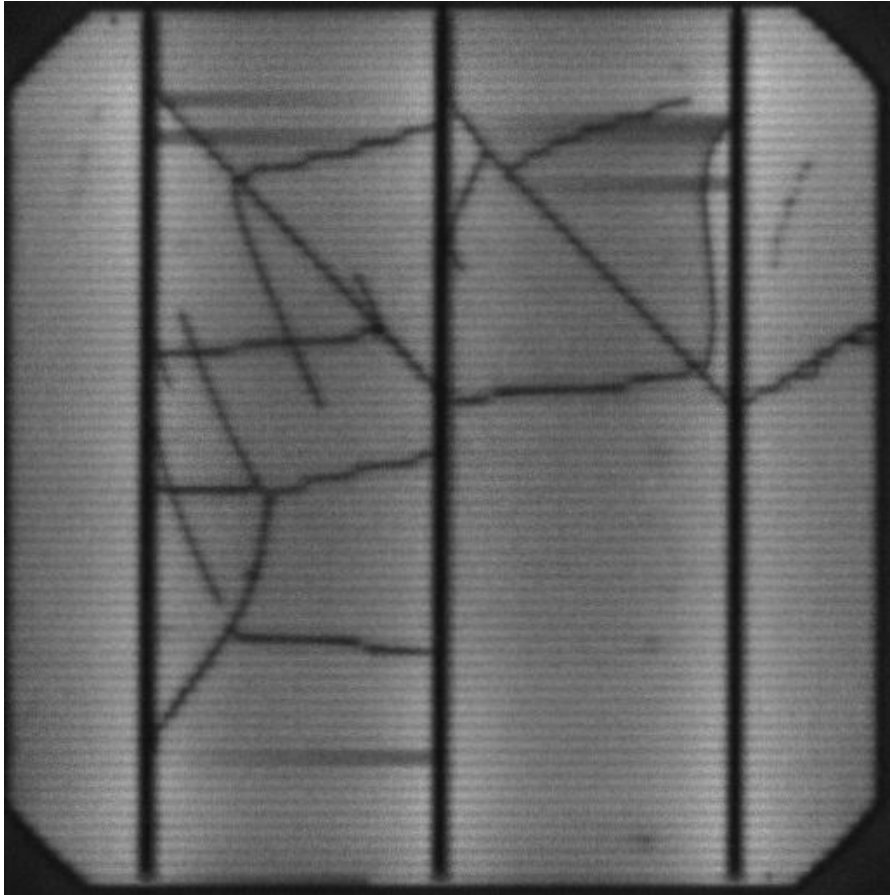
EL Image of Cell (4/8)



critical: <20% cell area affected

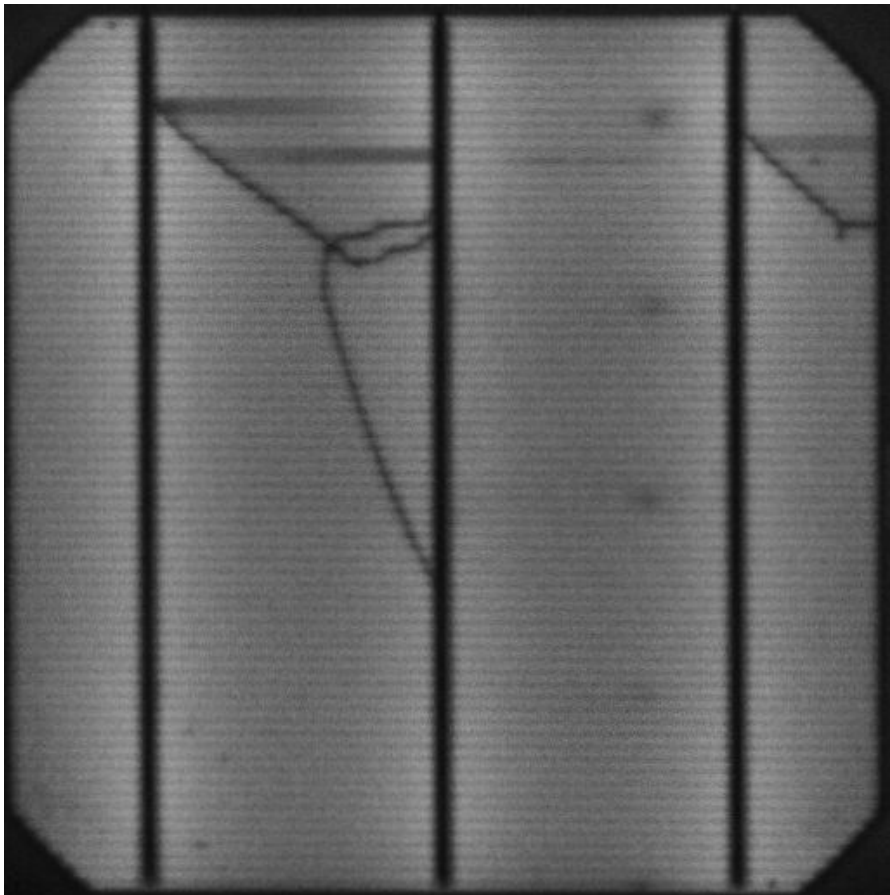
## EL details for ID20160622083811

EL Image of Cell (4/9)



critical: <20% cell area affected

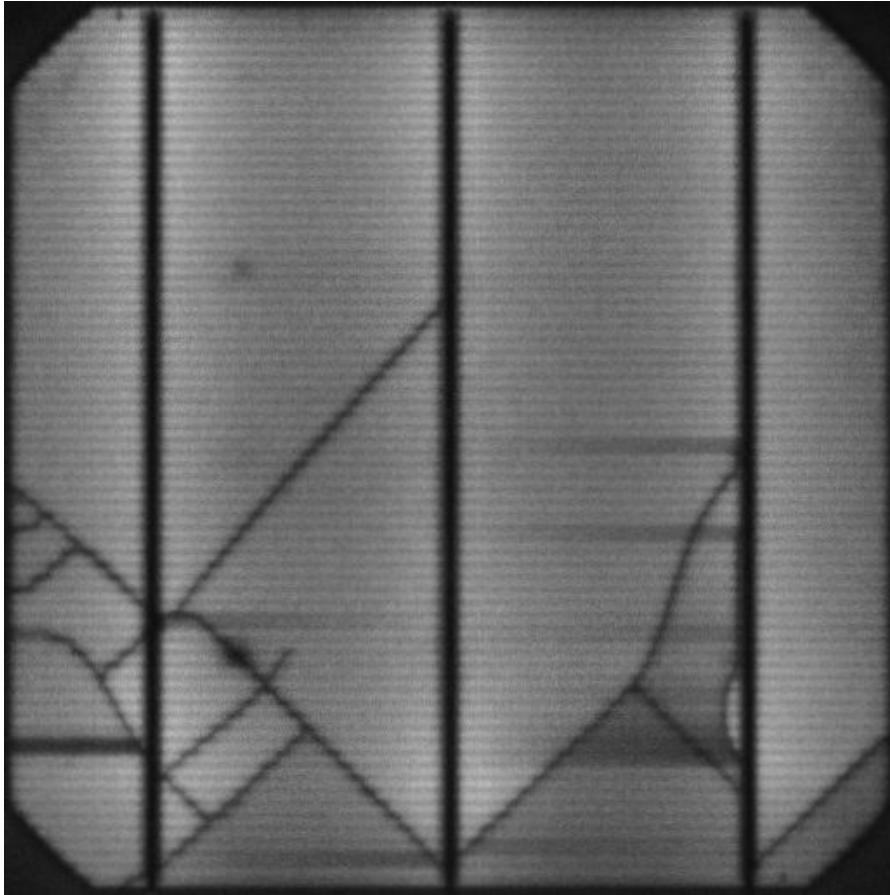
EL Image of Cell (4/10)



critical: <20% cell area affected

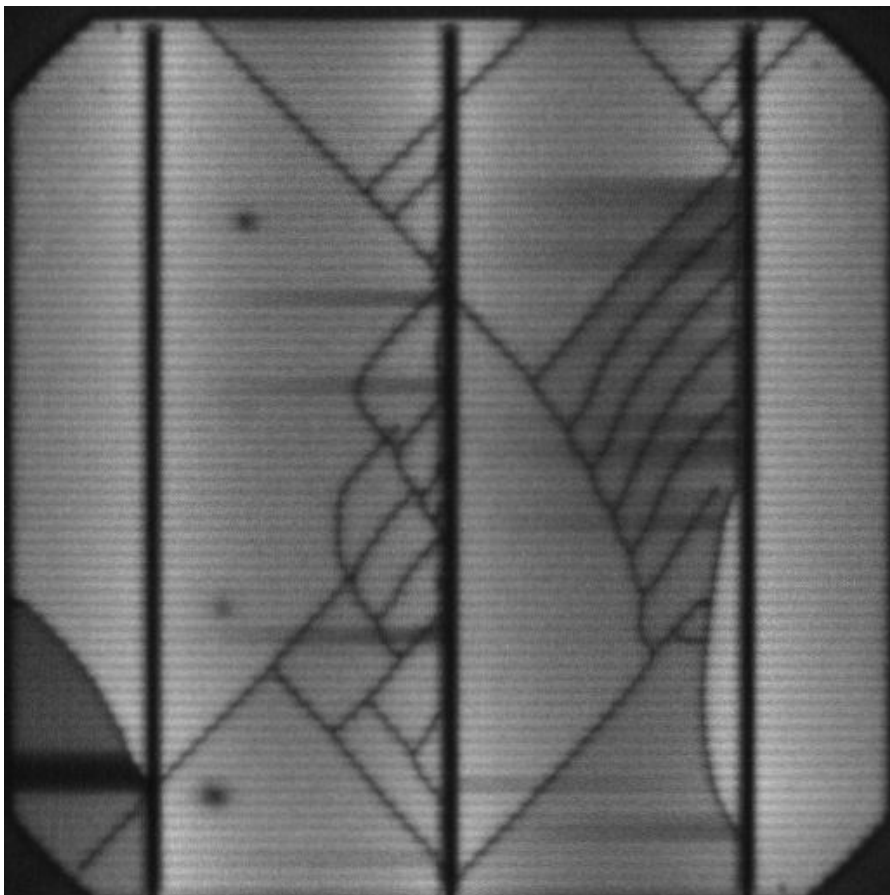
## EL details for ID20160622083811

EL Image of Cell (5/1)



critical: <20% cell area affected

EL Image of Cell (5/2)

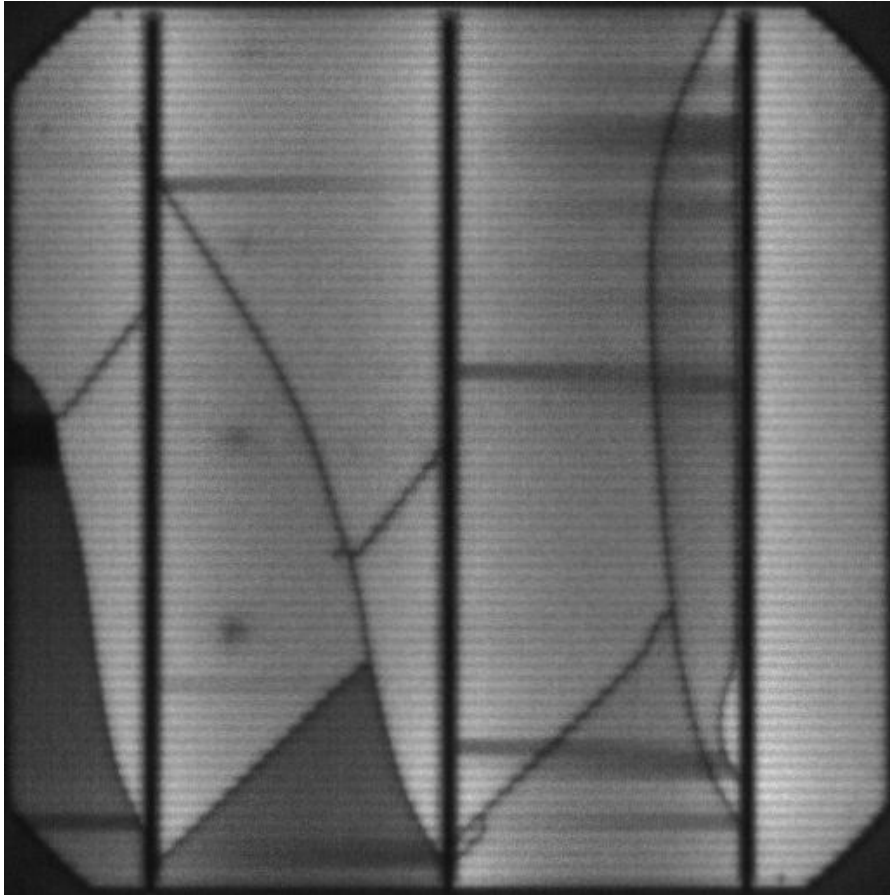


critical: <20% cell area affected



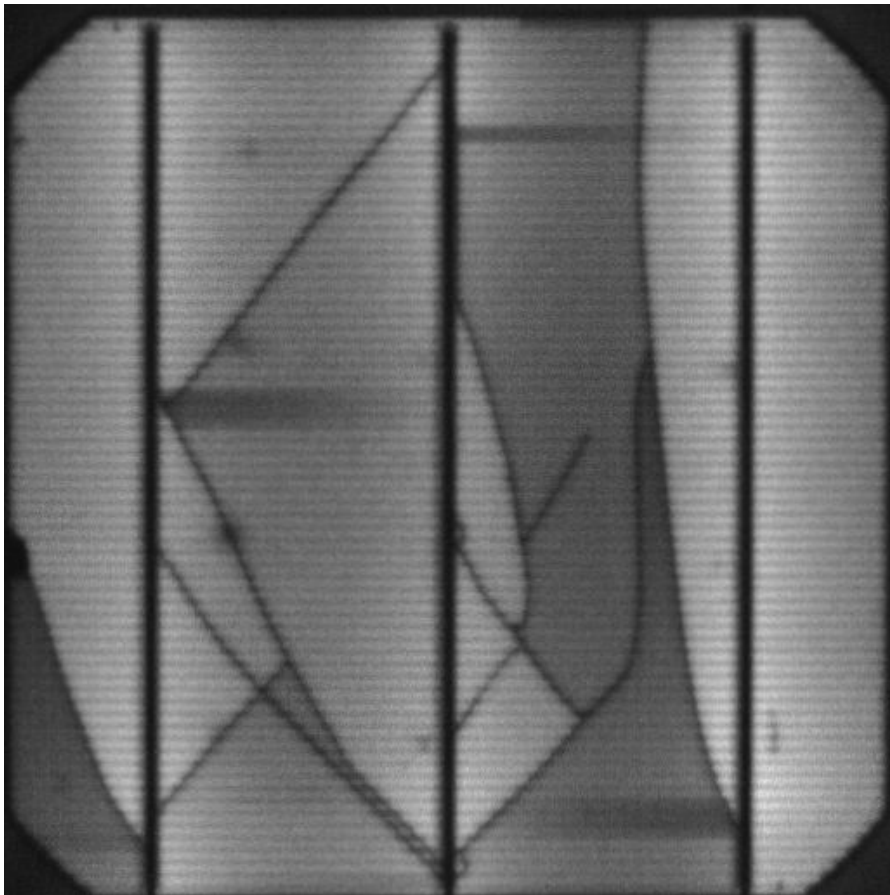
## EL details for ID20160622083811

EL Image of Cell (5/3)



critical: <20% cell area affected

EL Image of Cell (5/4)

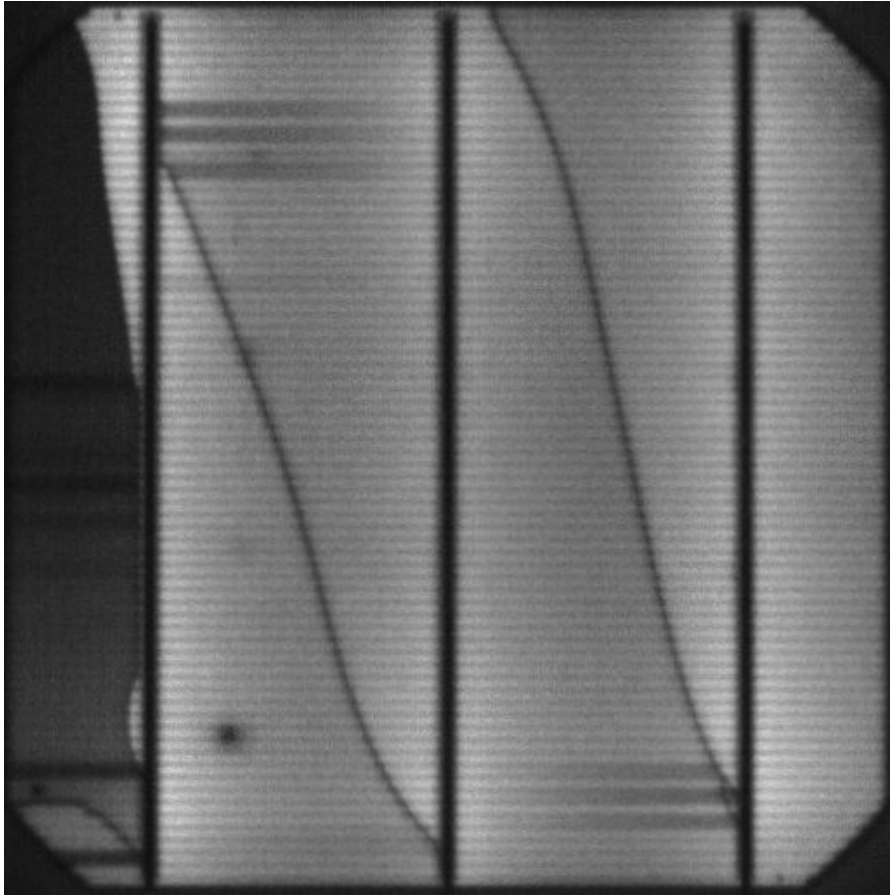


critical: <20% cell area affected



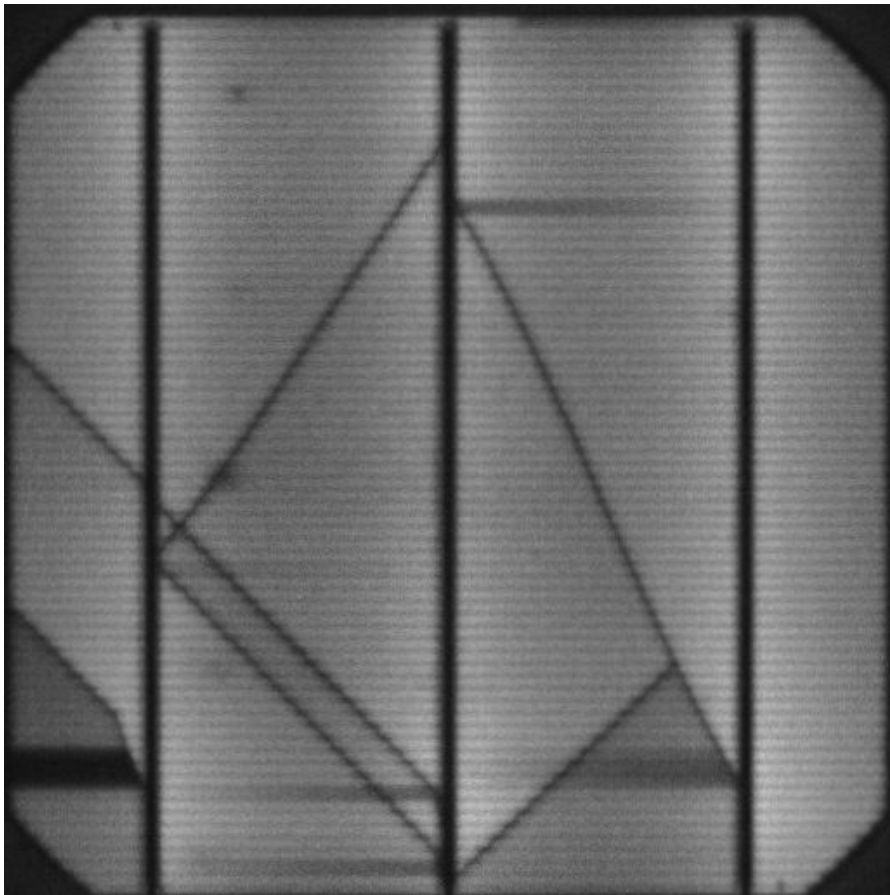
## EL details for ID20160622083811

EL Image of Cell (5/5)



critical: <20% cell area affected

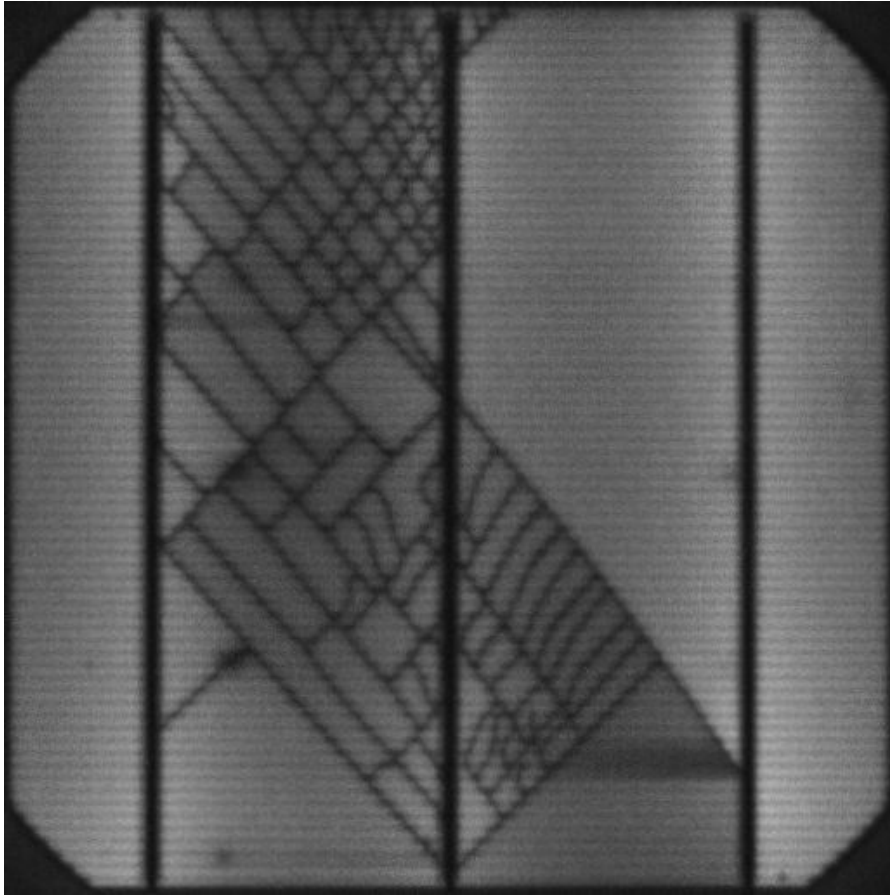
EL Image of Cell (5/6)



critical: <20% cell area affected

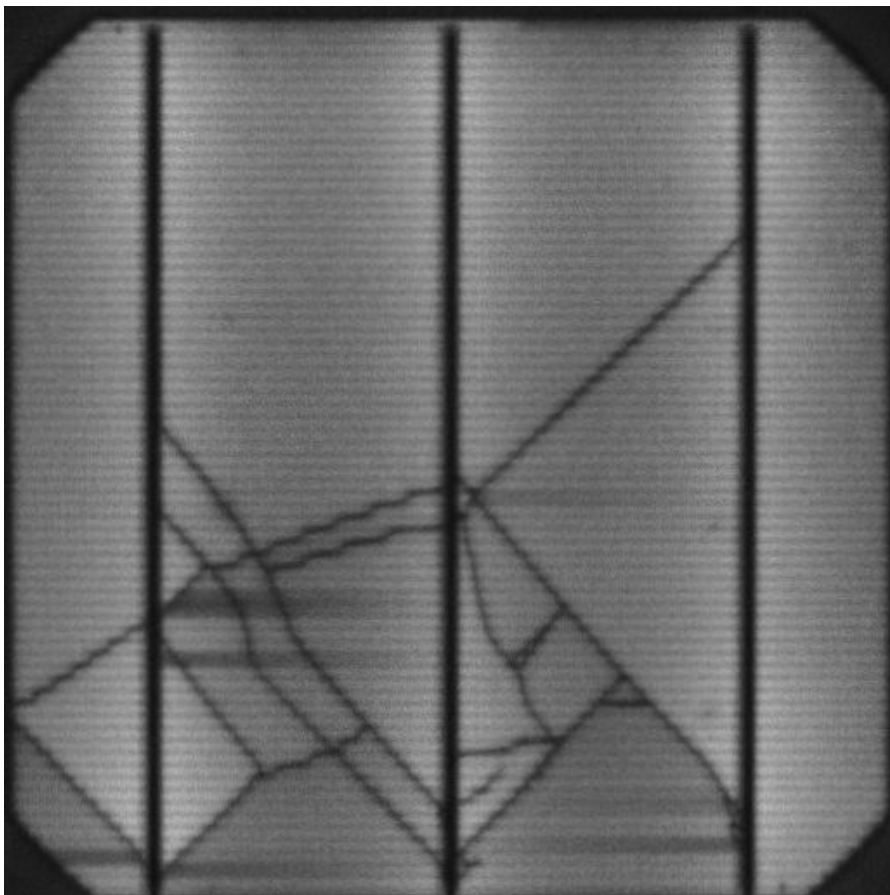
## EL details for ID20160622083811

EL Image of Cell (5/7)



very critical:  $\geq 20\%$  cell area affected

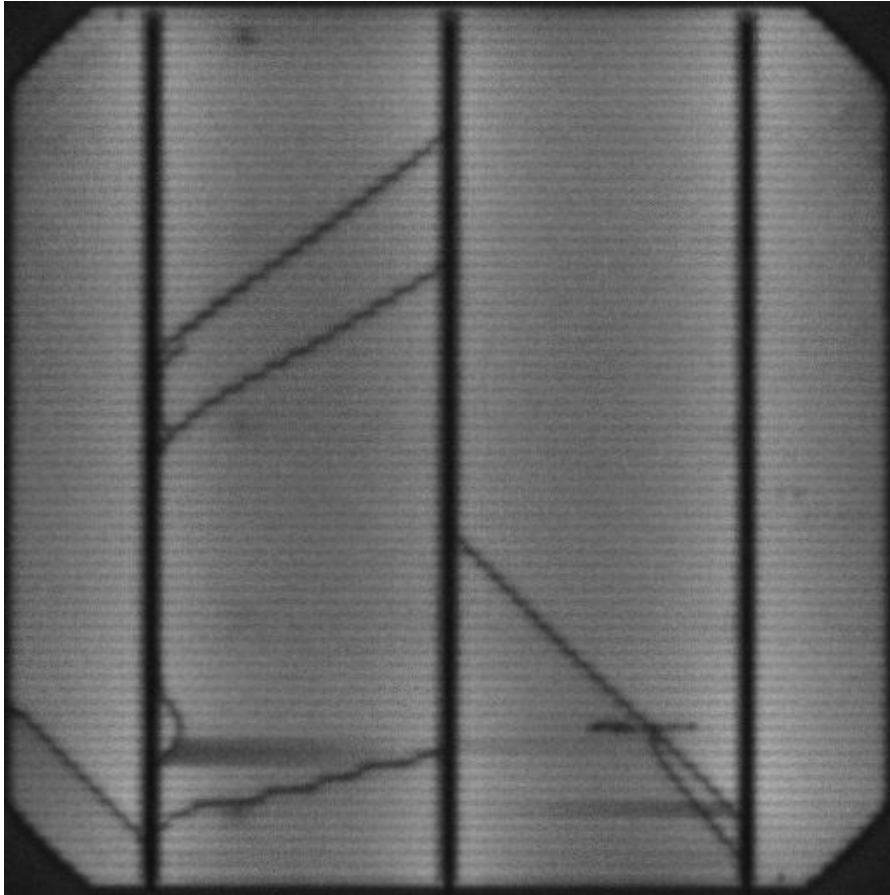
EL Image of Cell (5/8)



critical:  $< 20\%$  cell area affected

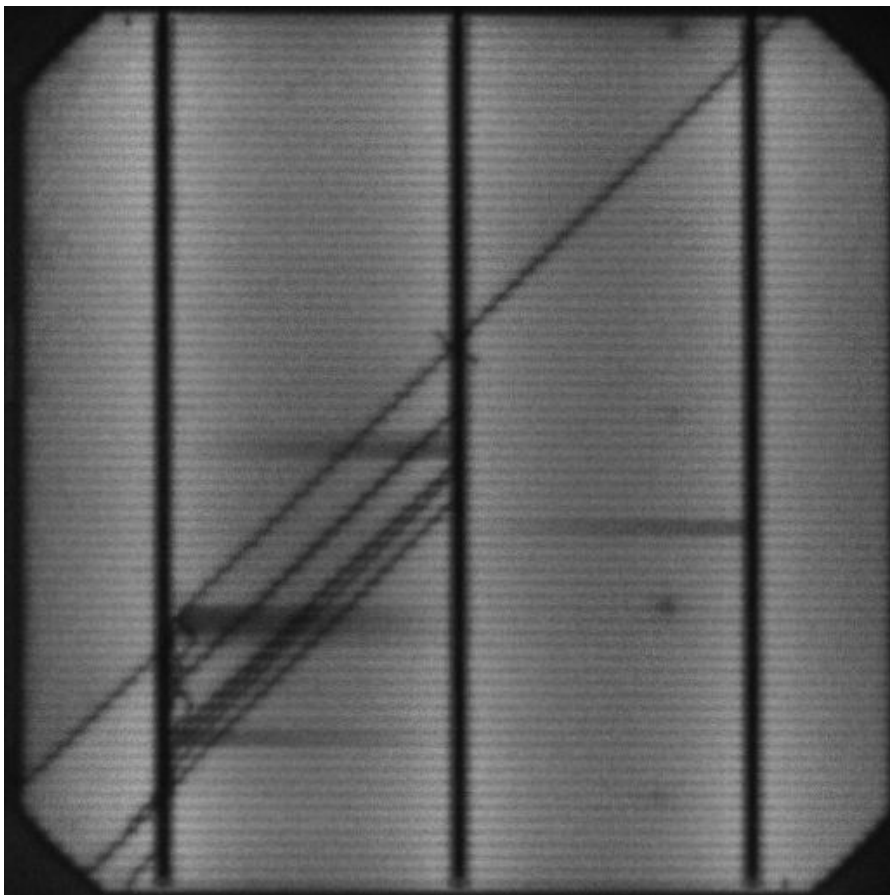
## EL details for ID20160622083811

EL Image of Cell (5/9)



critical: <20% cell area affected

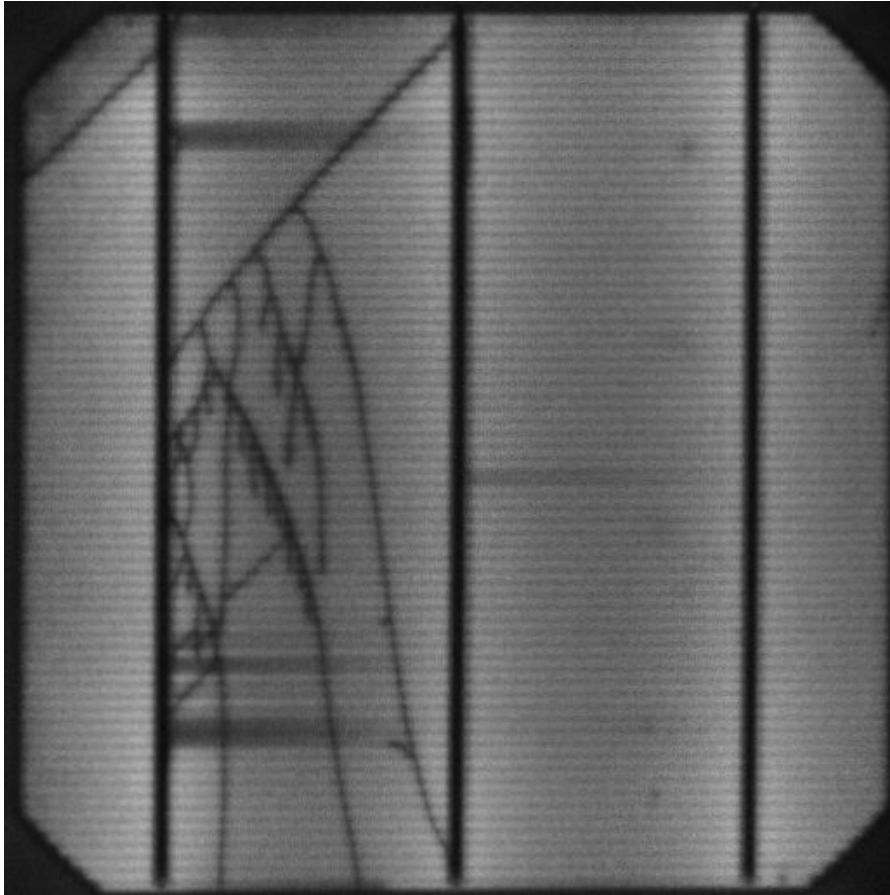
EL Image of Cell (6/1)



critical: <20% cell area affected

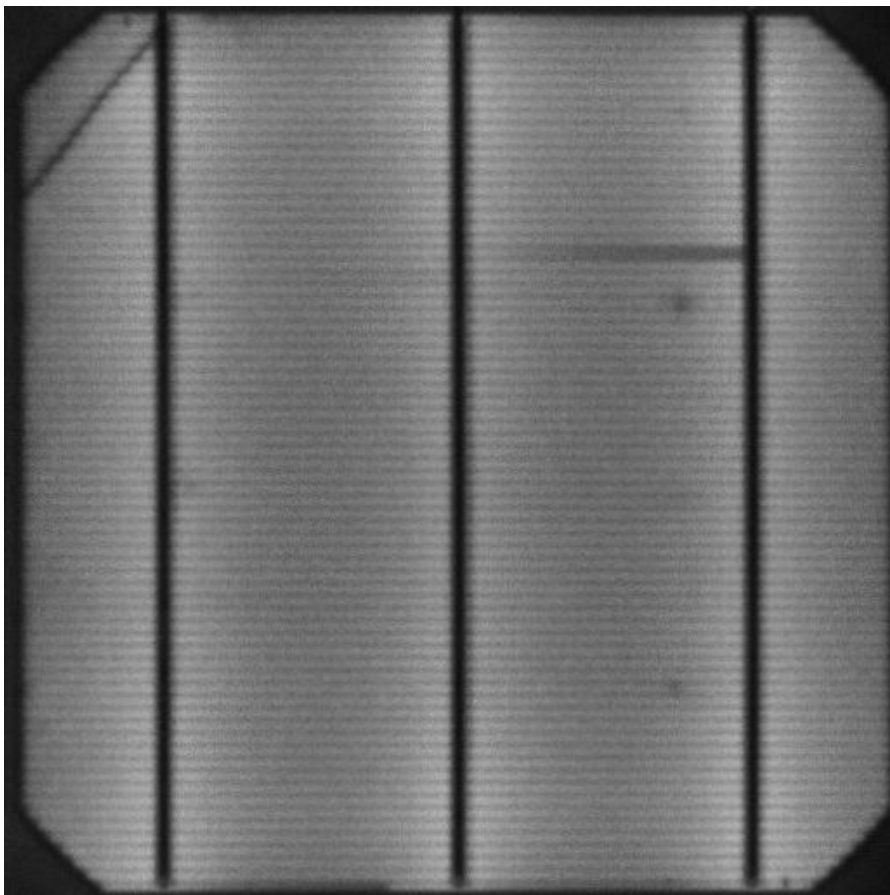
## EL details for ID20160622083811

EL Image of Cell (6/2)



critical: <20% cell area affected

EL Image of Cell (6/3)

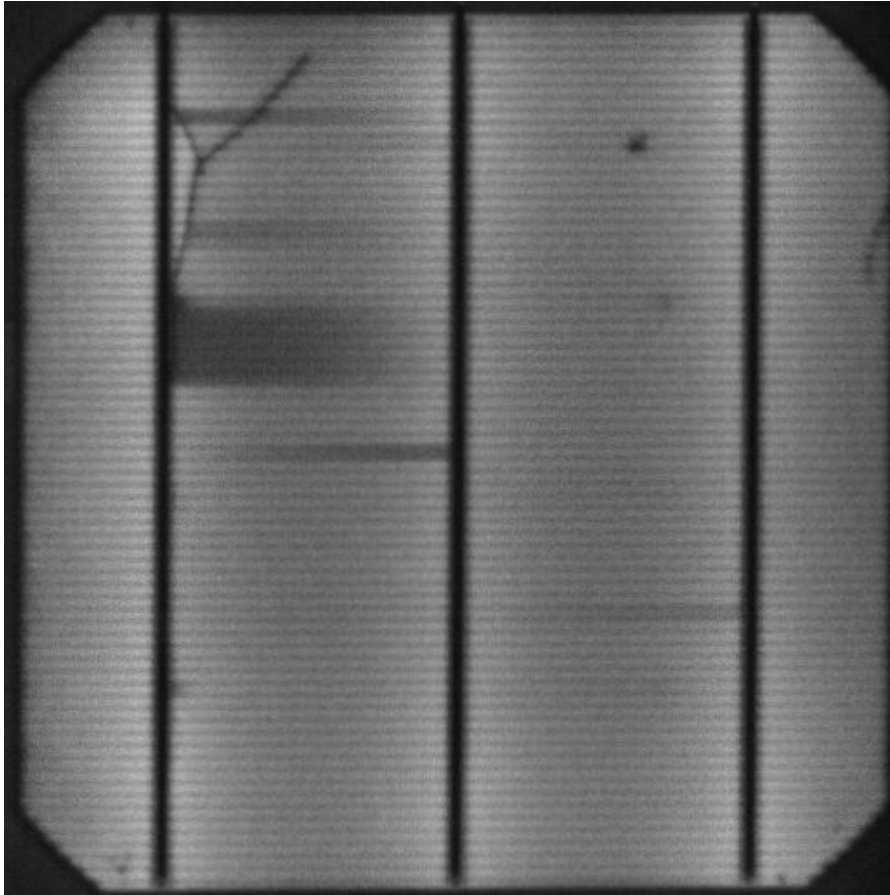


critical: <20% cell area affected



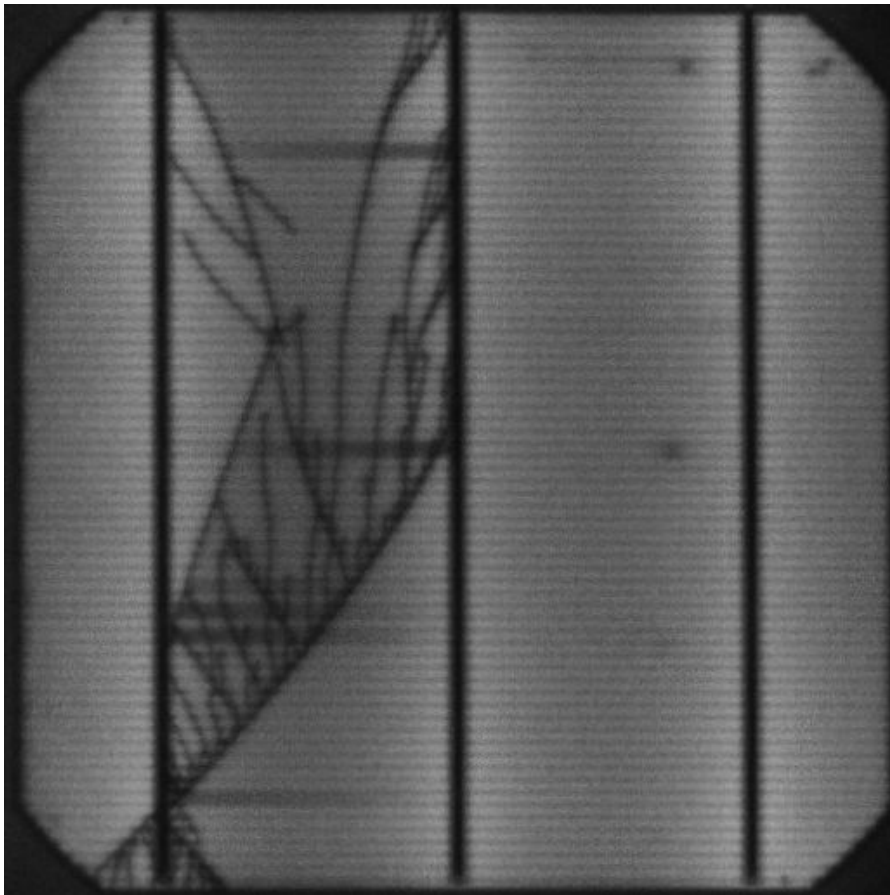
## EL details for ID20160622083811

EL Image of Cell (6/4)



critical: <20% cell area affected

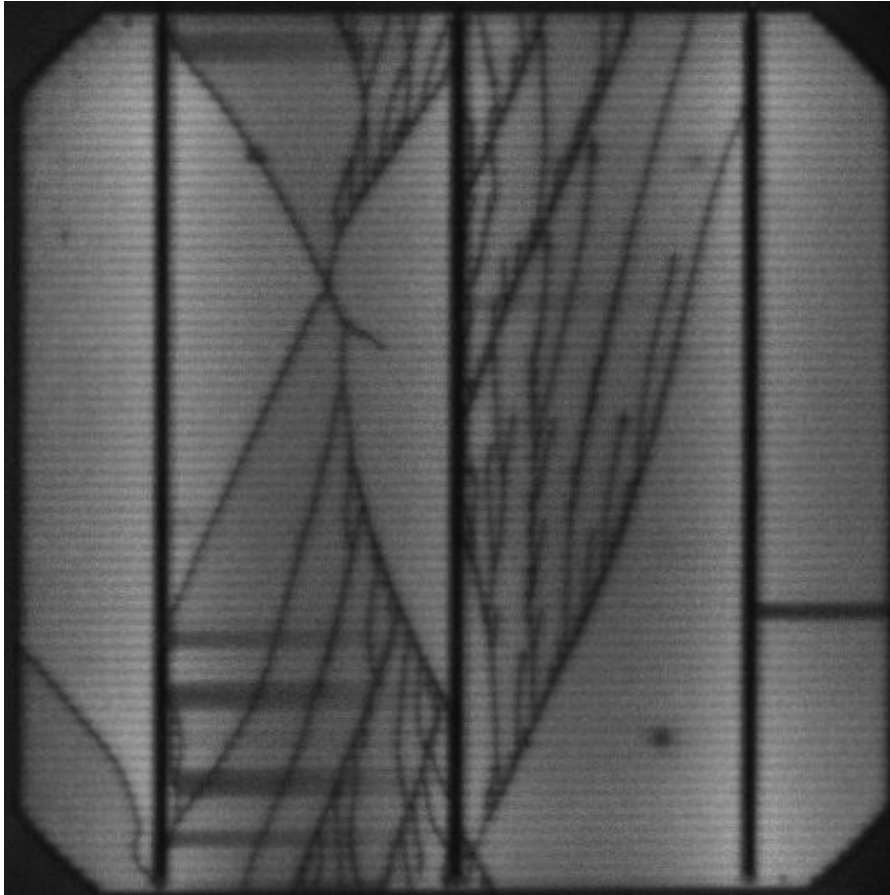
EL Image of Cell (6/5)



critical: <20% cell area affected

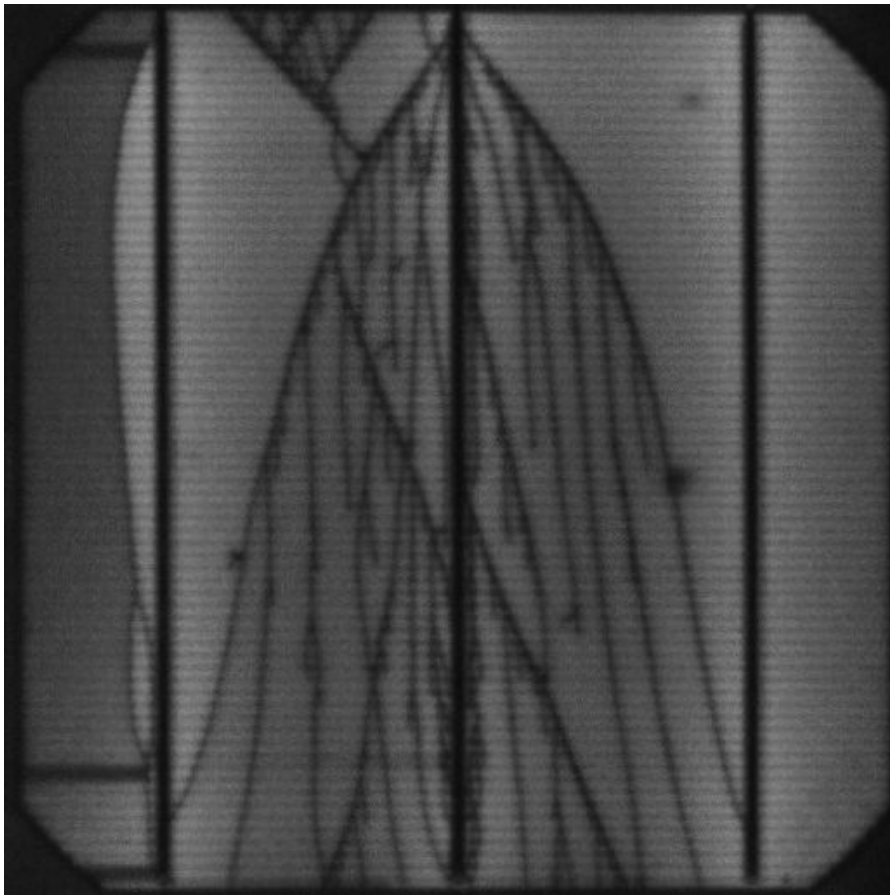
## EL details for ID20160622083811

EL Image of Cell (6/6)



very critical:  $\geq 20\%$  cell area affected

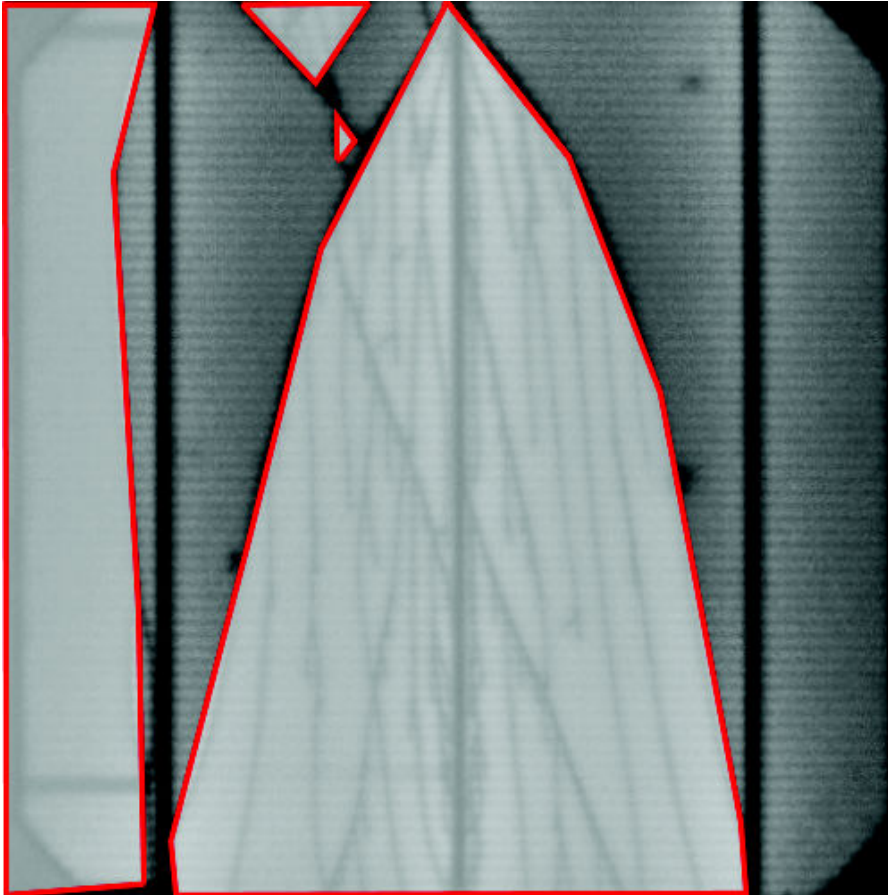
EL Image of Cell (6/7)



very critical:  $\geq 20\%$  cell area affected

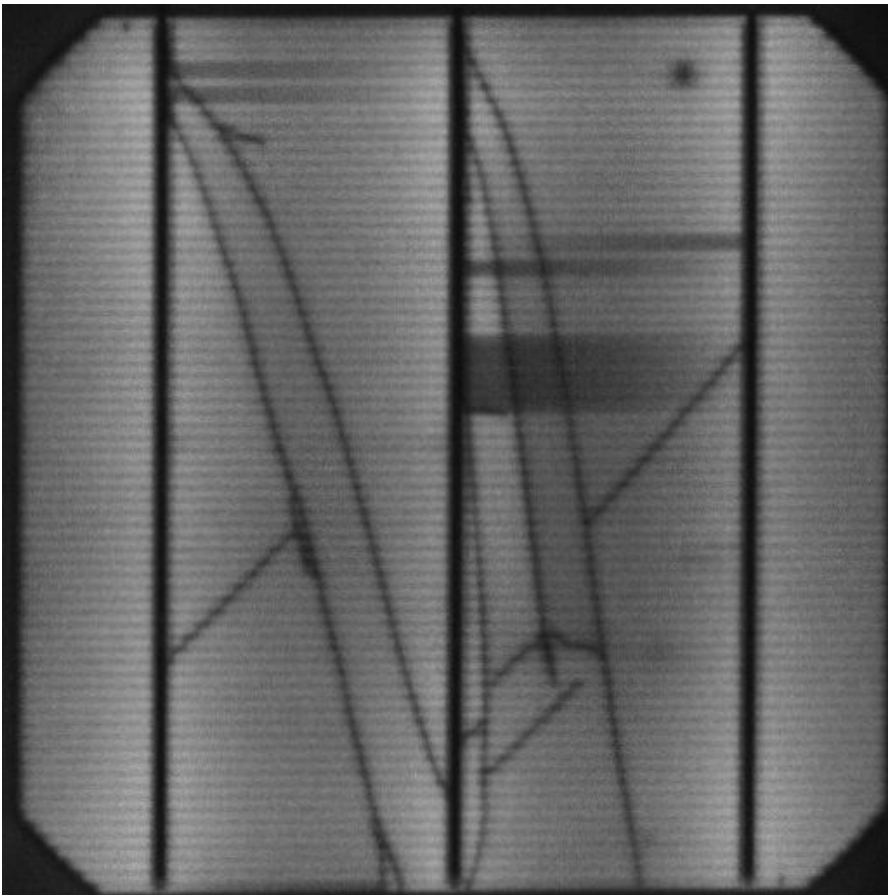
## EL details for ID20160622083811

Affected Area of Cell (6/7): 53.43%



largest affected area

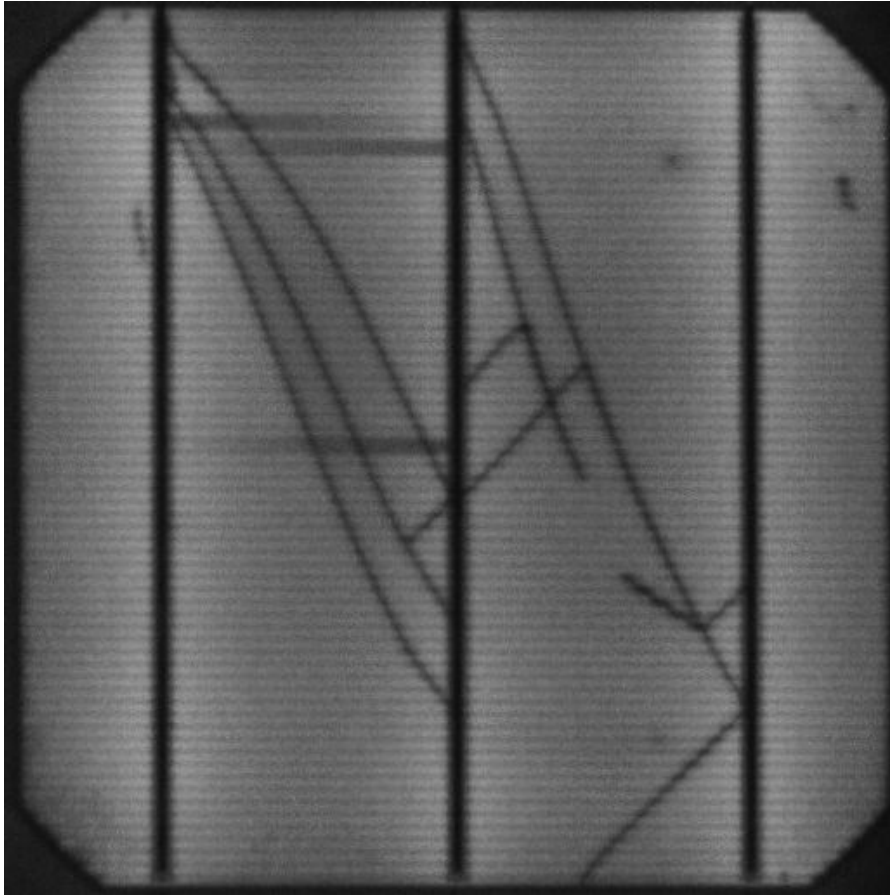
EL Image of Cell (6/8)



critical: <20% cell area affected

## EL details for ID20160622083811

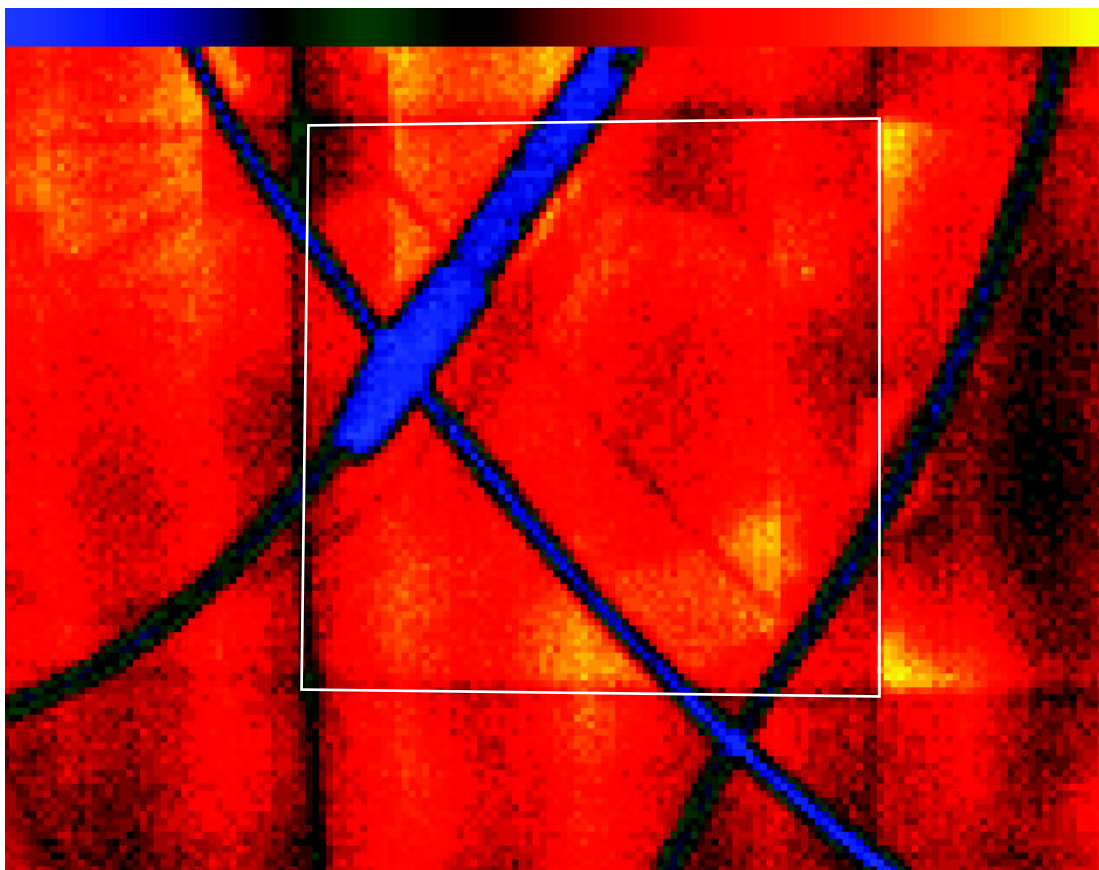
EL Image of Cell (6/9)



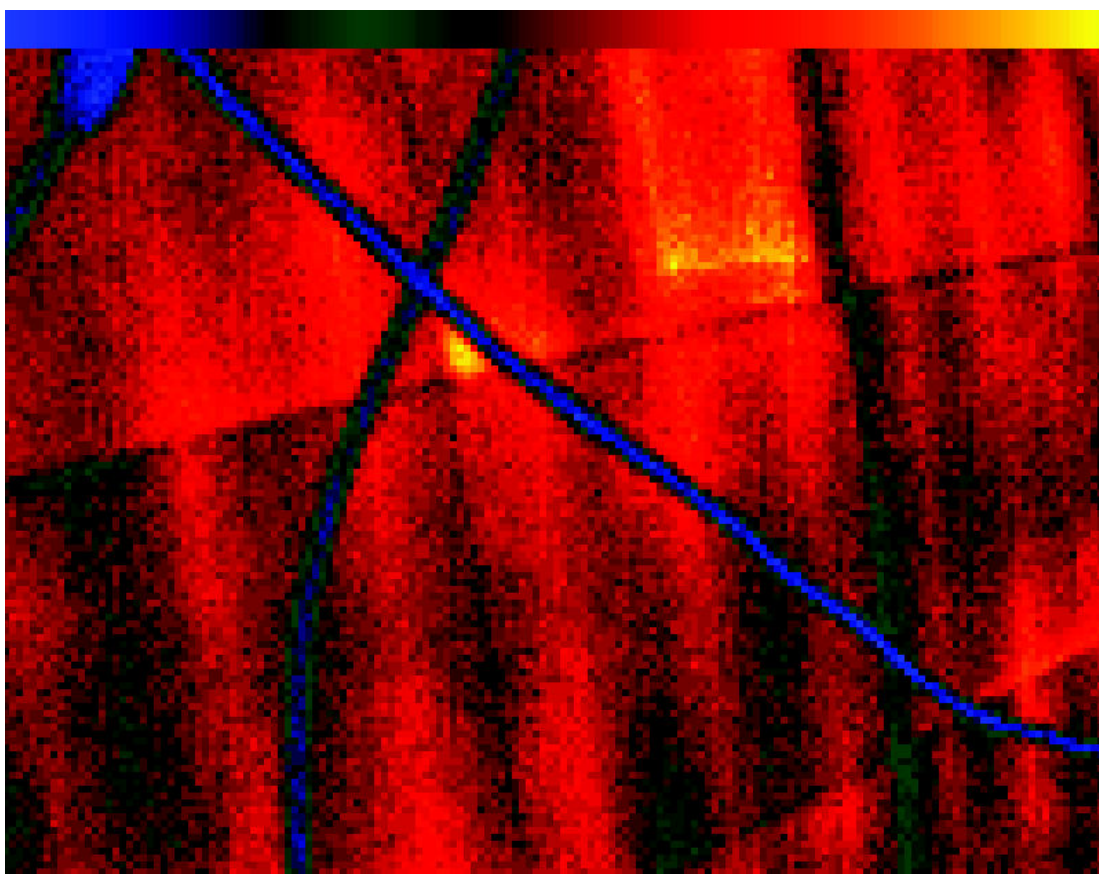
critical: <20% cell area affected



## Thermography for ID20160622083811



Palet Low:26.4°C High:30.0°C Temperature Lowest:26.4°C Highest:29.8°C  
I[A]:12.0 U[V]:41.5 t[s]:58 dT[°C]:3.4

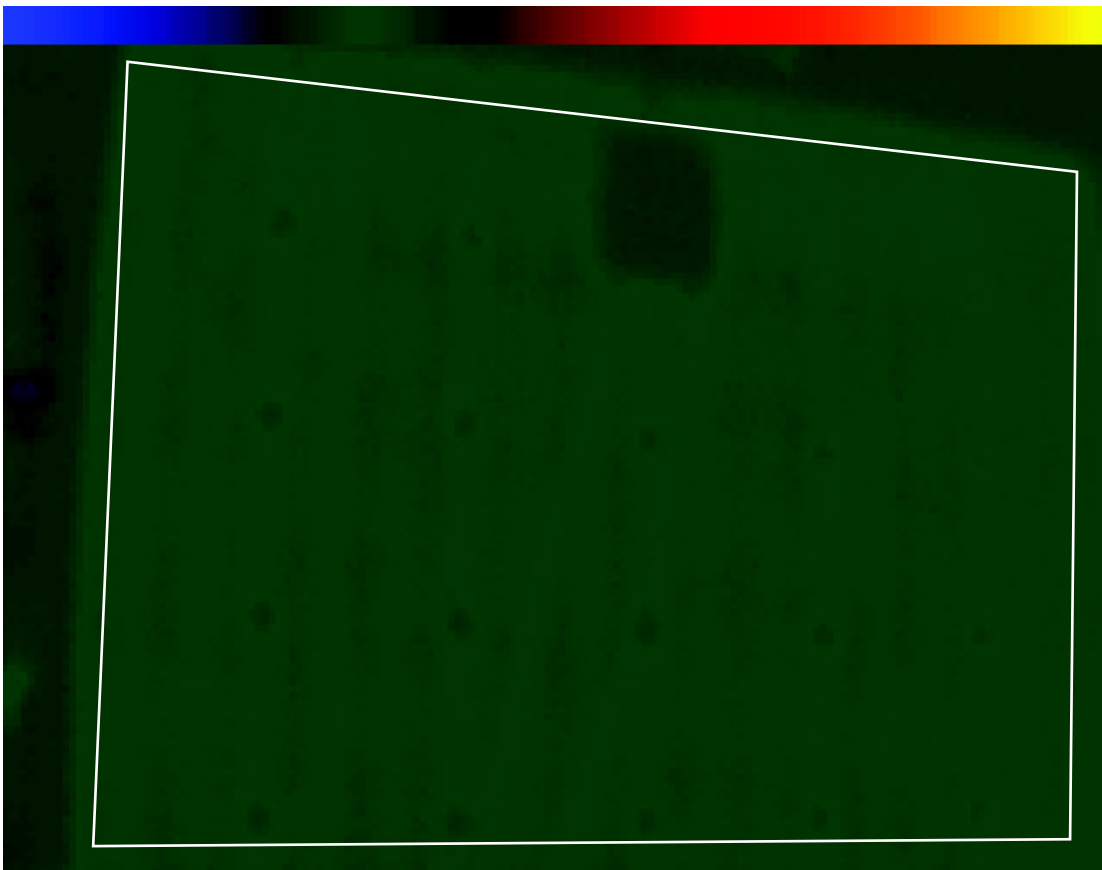


Palet Low:26.5°C High:30.3°C  
I[A]:12.0 U[V]:41.5 t[s]:52 dT[°C]:3.8

## Thermography for ID20160622083811

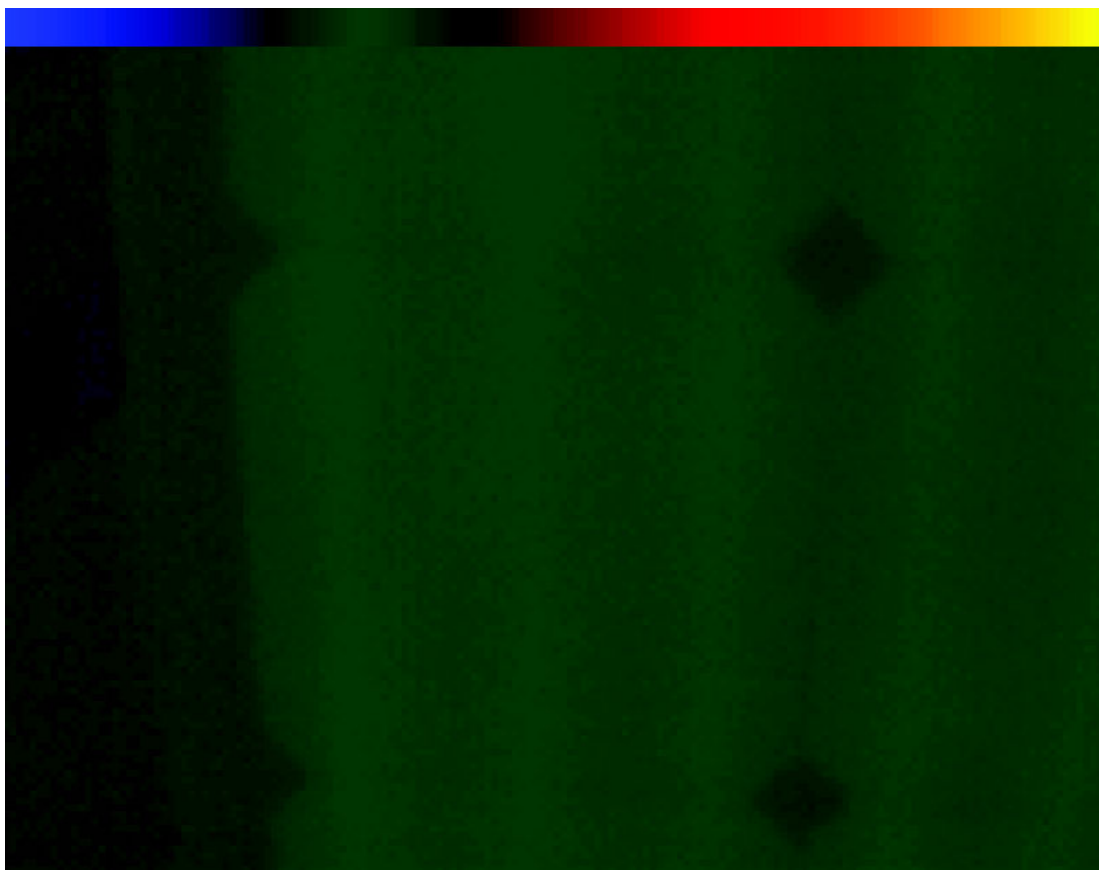


Palet Low:15.0°C High:50.0°C Temperature Lowest:24.1°C Highest:36.8°C  
I[A]:12.0 U[V]:41.8 t[s]:5 dT[°C]:12.7

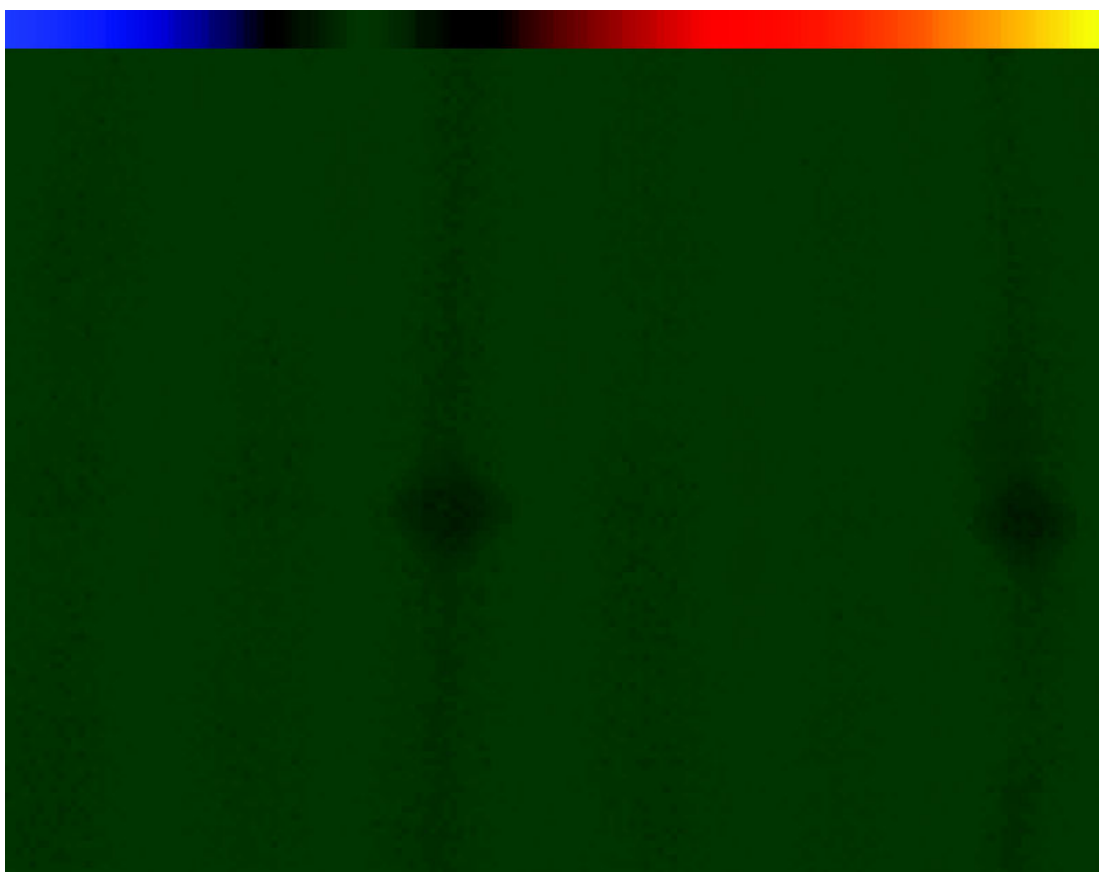


Palet Low:15.0°C High:50.0°C Temperature Lowest:24.6°C Highest:27.5°C  
I[A]:12.0 U[V]:43.1 t[s]:47 dT[°C]:2.9

## Thermography for ID20160622083811



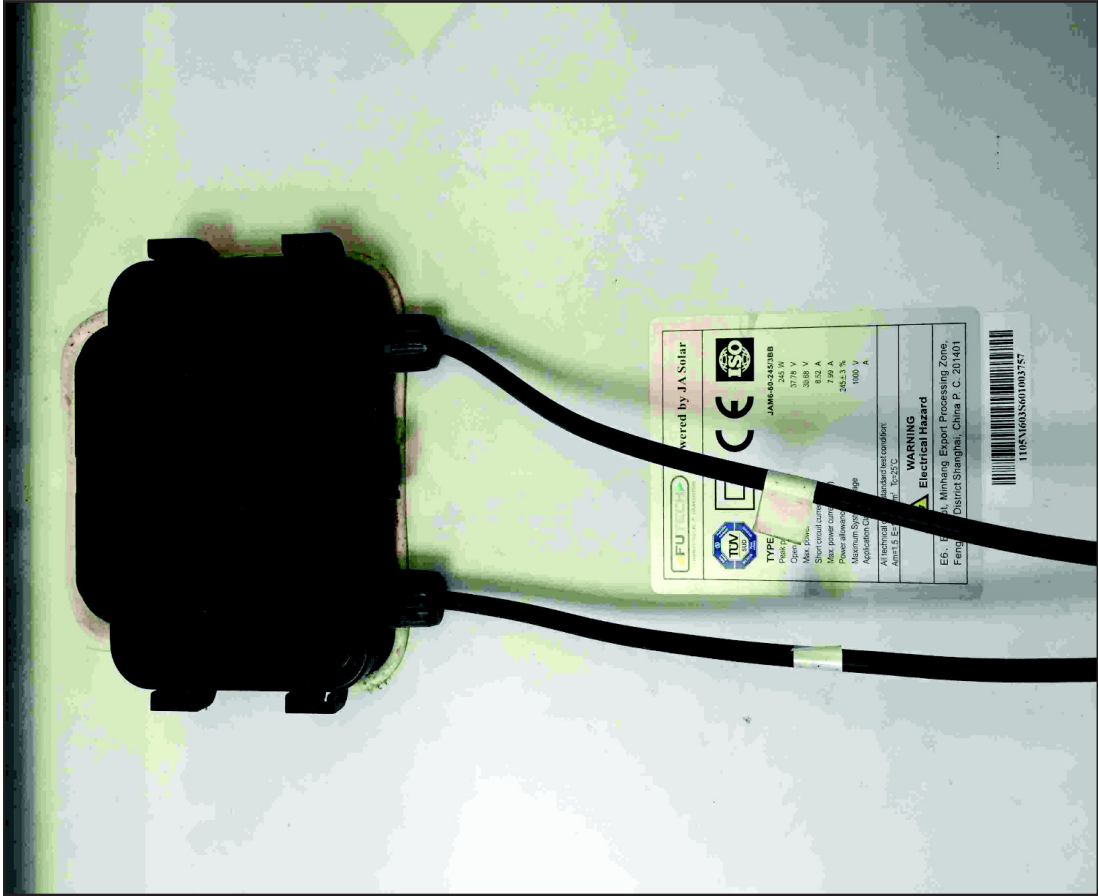
Palet Low:15.0°C High:50.0°C Temperature Lowest:23.0°C Highest:26.7°C  
I[A]:12.0 U[V]:43.1 t[s]:24 dT[°C]:3.7



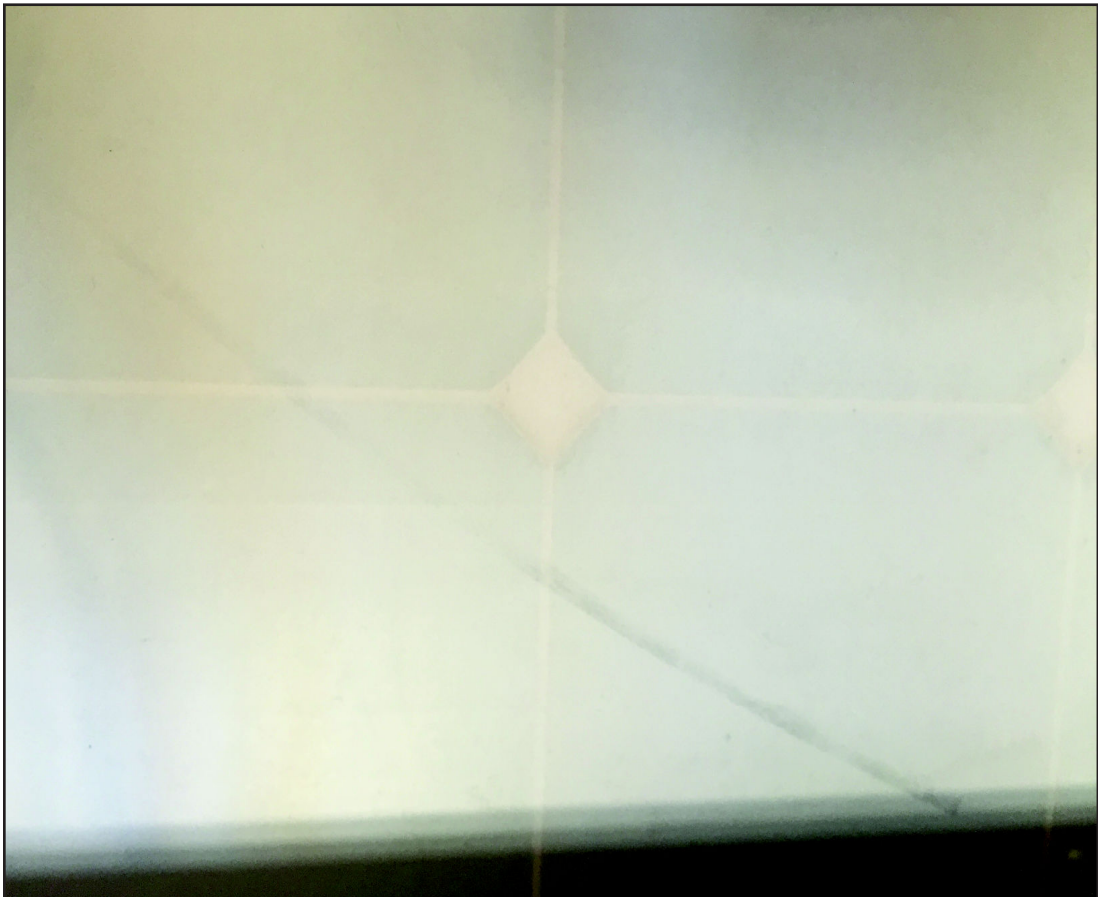
Palet Low:15.0°C High:50.0°C Temperature Lowest:24.8°C Highest:26.9°C  
I[A]:12.0 U[V]:43.5 t[s]:15 dT[°C]:2.1



# Photos for ID20160622083811



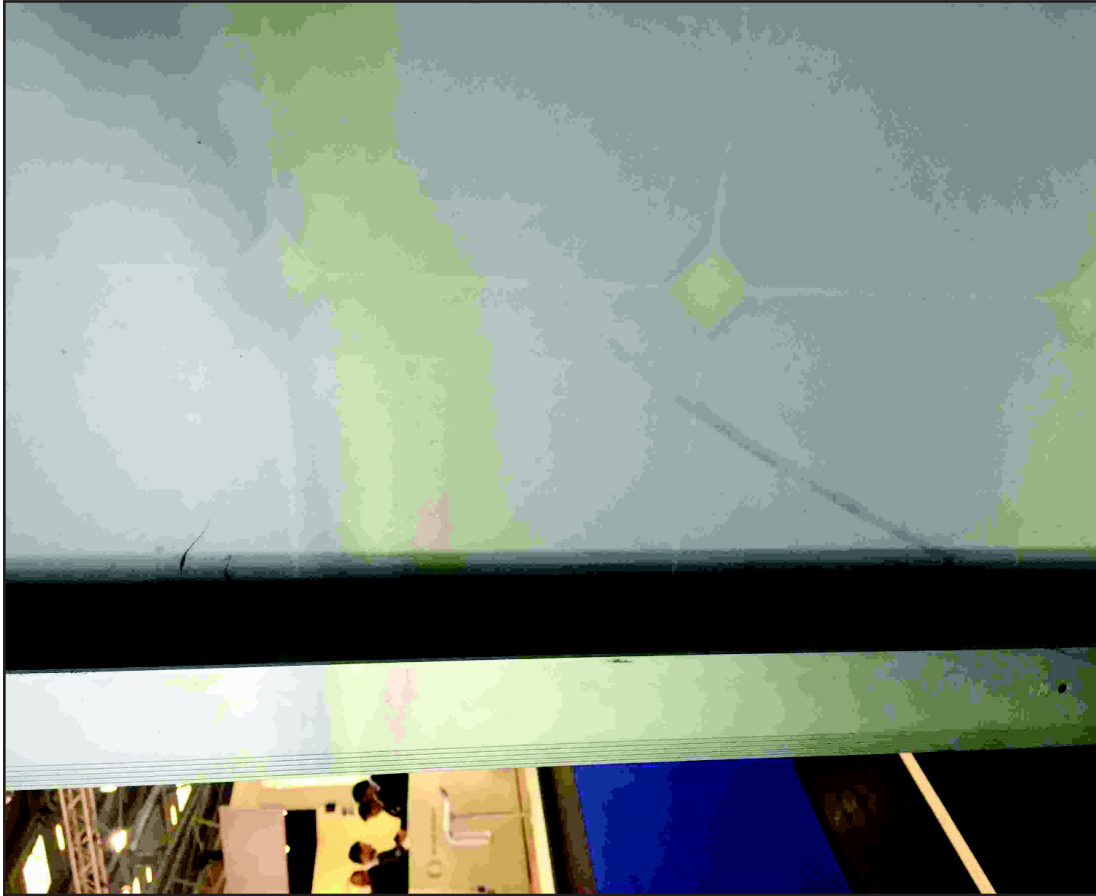
## Connection box



## Backside scratch



## Photos for ID20160622083811



backsite scratch